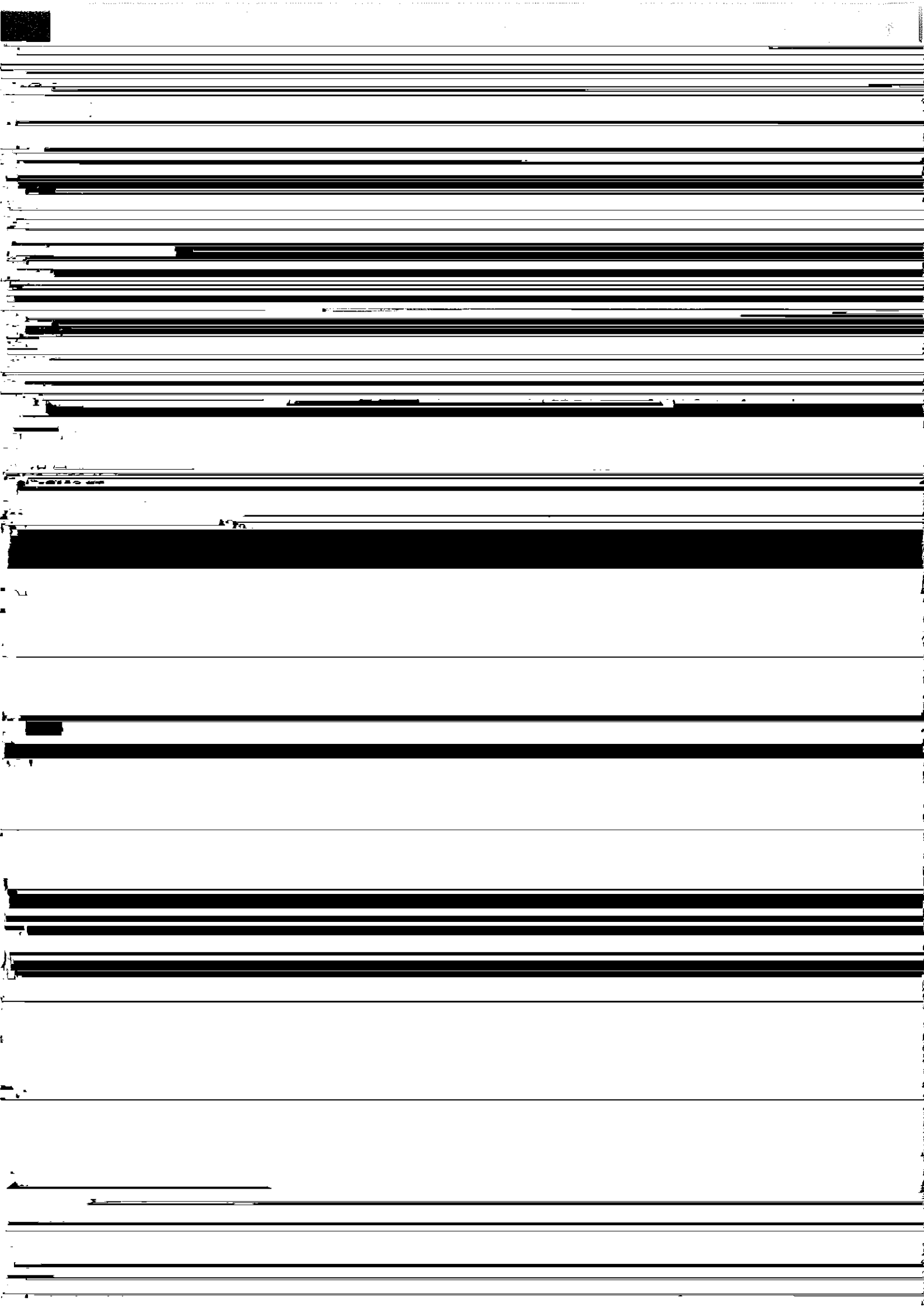


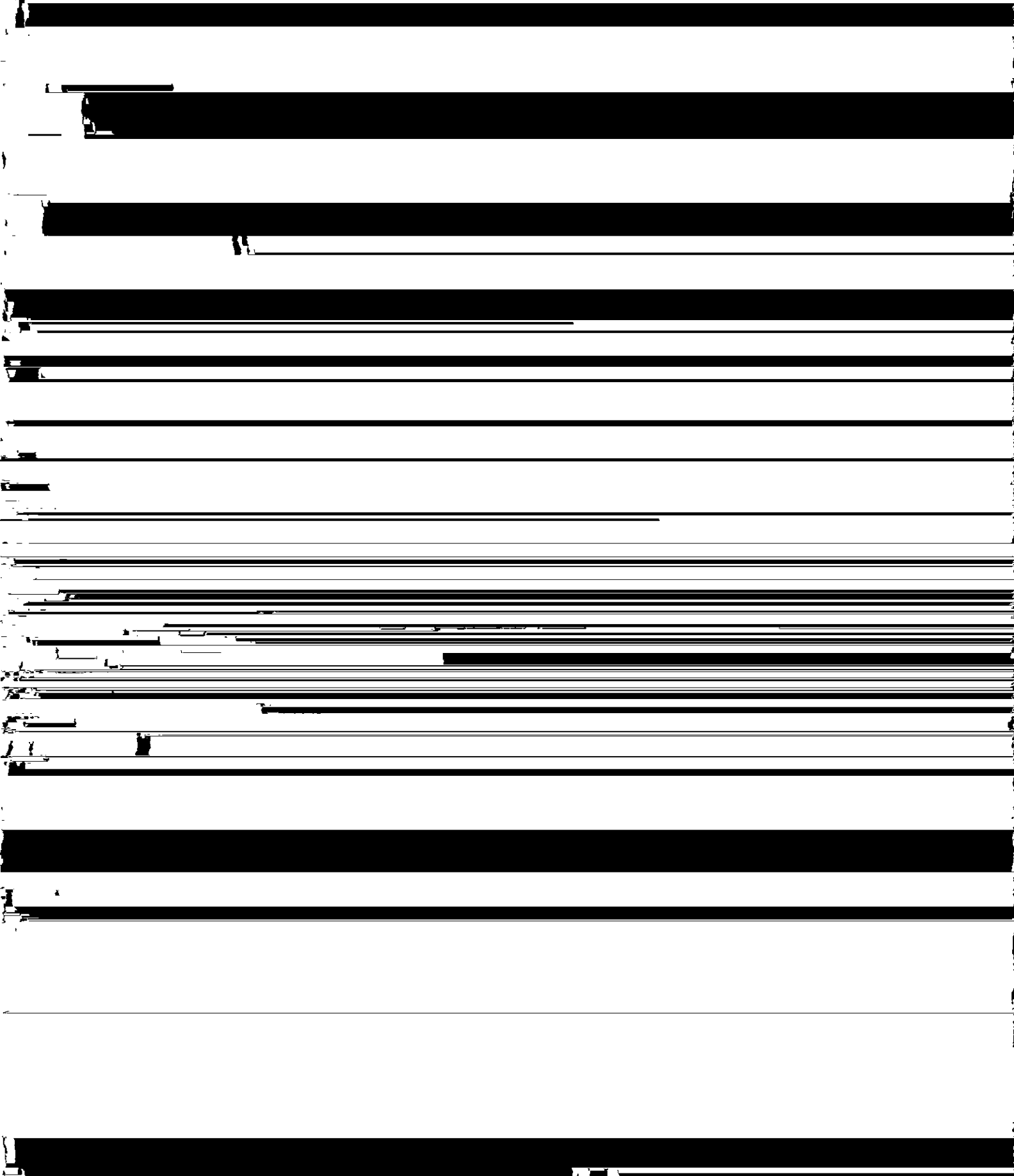


report).

Kenton Miller, a former Director General of IICN and Chair of OMBDA, stated that



Steve Edwards is Director IFCN's Sustainable Use Initiative (SUI). Following the Bureau



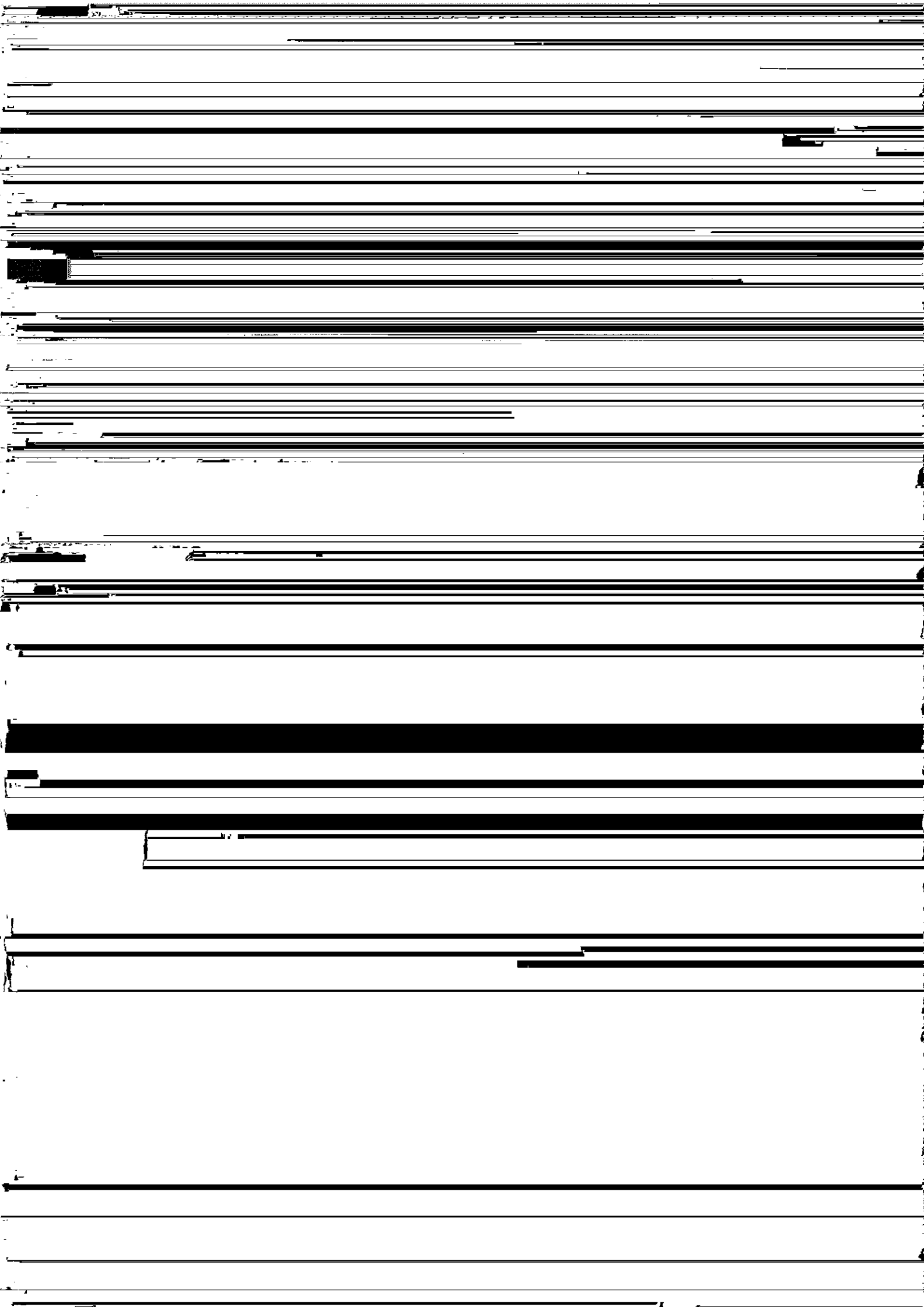
wanting feedback from this Review on three issues: How does one pull together a wide diversity of programmes within an organization? How does one build linkages between global policy work and projects in the field? And how can the WWF programme link into the IUCN BDP?

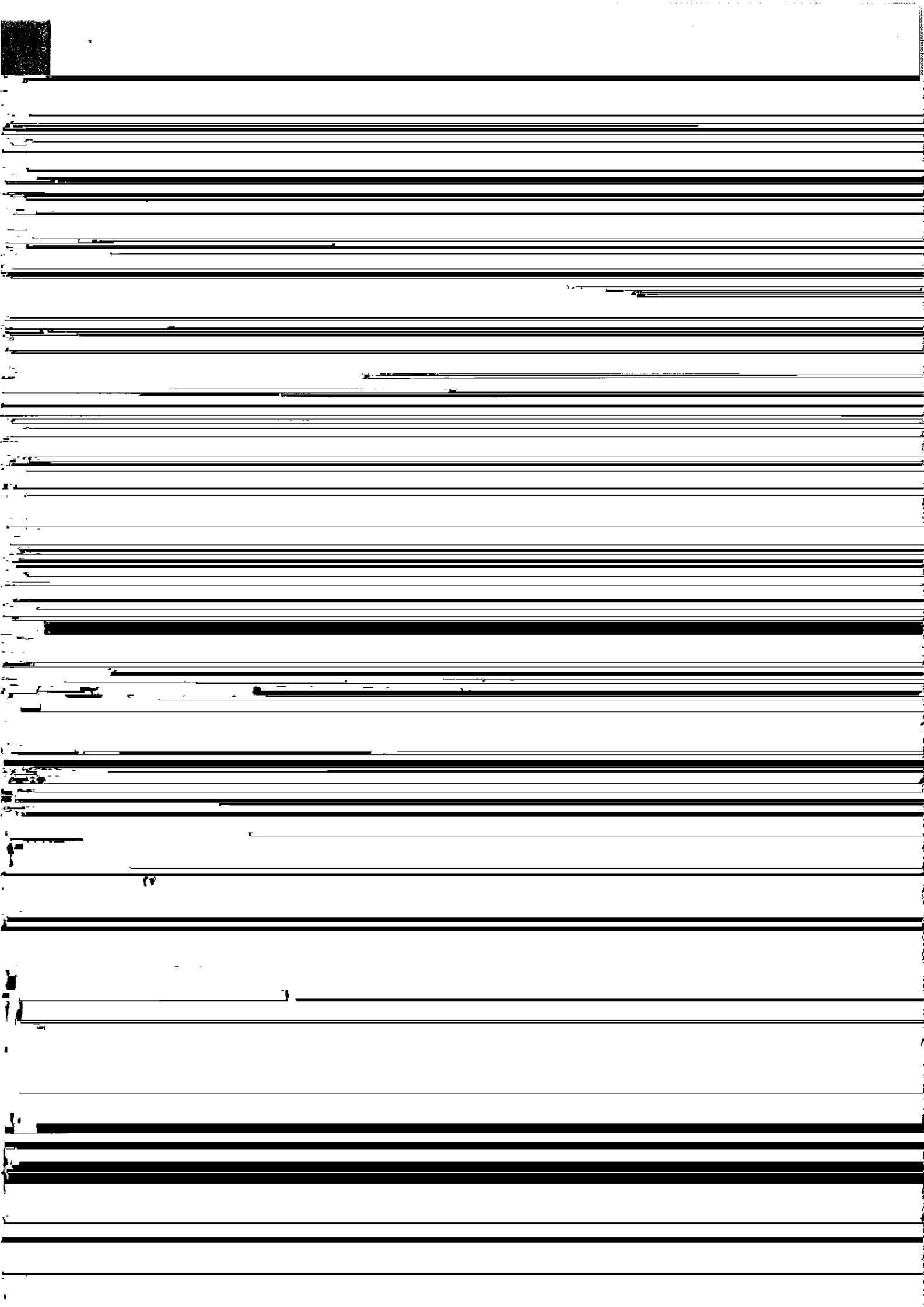
Chip Barber is at WRI and based in the Philippines. BDP has been influential not only through its many publications but through its work in the regions. There is a need to focus on

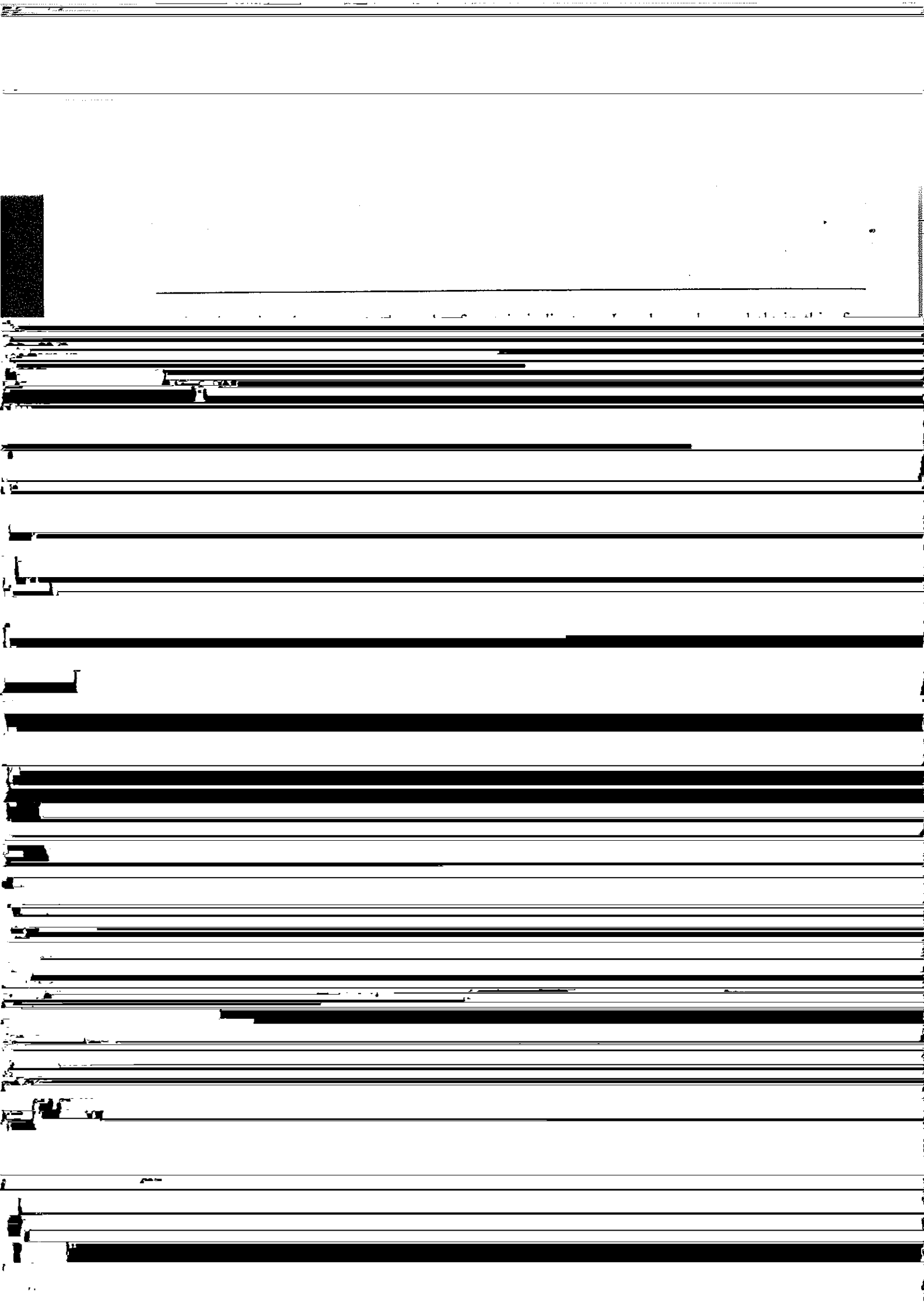
work in depth. A technical support package could be made available to other countries

Care countries could be picked out in terms of biodiversity











(S) With CEE, Ashim Station has reached an early stage of development.

