

WPC Evaluation Work

C o n t e n t s

1. Introduction	1
2. Overall Workshop Evaluation Results	2
2.1 Overview of Workshop Streams	2
3. Specific Workshop Evaluation Results for Workshop Stream III	11
3.1 Workshop III Objectives	11
3.2 Workshop III Cross-Cutting Themes	13
3.3 Profile of Workshop Stream III Participants	16
4. Short Course Results	18
4.1 Evaluating Governance	18

E x h i b i t s

Exhibit 2.1 Attendance to Workshop Stream	2
Exhibit 2.2 Organization of the Workshop Streams	3
Exhibit 2.3 Simultaneous Breakout Sessions	3
Exhibit 2.4 Workshop Objectives	

Exhibit 3.4 Presentation of a Governance Typology
Exhibit 3.5

12

1. Introduction

Seven major Workshop Streams and their associated sub-sessions provided a major part of the substantive technical discussions at the World Parks Congress in Durban in September 2003. For three full days close to 2,800 participants attended seven major workshop streams and the many associated sub-sessions and short courses. The streams were:

-

2. Overall Workshop Evaluation Results

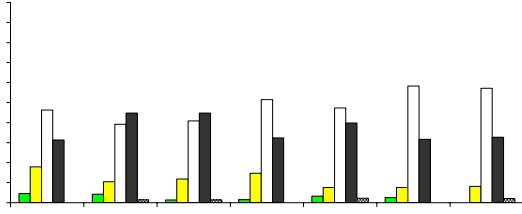
Workshop Stream I: Linkages in the Landscape & Seascape
Workshop Stream II: Building Broader Support for Protected Areas

sessions in order to reduce overlap and improve the achieve

Exhibit 2.6 Key Issues in Workshop Stream

Exhibit 2.7 Workshop Effectiveness in Identifying Key Challenges and Issues

Extent to which questionnaire respondents a



Finding 2: Overall workshop streams were effectively chaired and relevant resource persons were able to constructively contribute to the debates, however some improvements were suggested.

Over three-quarters of questionnaire respondents agreed or tended to agree that workshops were either effectively chaired (see Exhibit 2.10) or that resource persons associated with each workshops (subgroup chairs, co-chairs and presenters) were able to constructively contribute to the workshop debates (see Exhibit 2.11). While the quality of presenters (competence, expertise and experience) was recognized as being one of the most significant strengths of the workshop streams, a concern was noted by participants that improvements could be made. Some respondents commented that chairs and facilitators lacked appropriate skills or abilities to manage sessions, facilitate discussions and use time efficiently.

Exhibit 2.10 Effectively Chaired Workshops

Exhibit 2.11 Resource Person Contributions



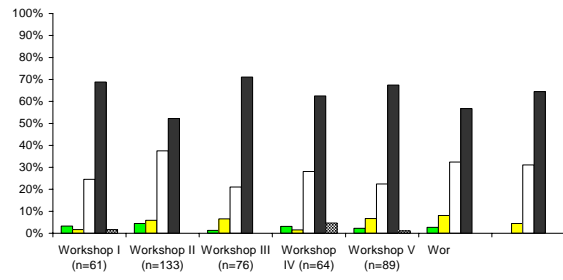
Exhibit 2.12 Knowledge of Topics Discussed

Exhibit 2.13 Workshop Relevance

WPC Evaluation Workshop Stream III Report

to bear in the workshop sessions, proved to be the most significant strength of the workshop streams according to the respondents

Extent to which questionnaire respondents agree that the workshops presented a good opportunity to network with others



WPC Evaluation Workshop Stream III Report

3.2 Workshop III Cross-Cutting Themes

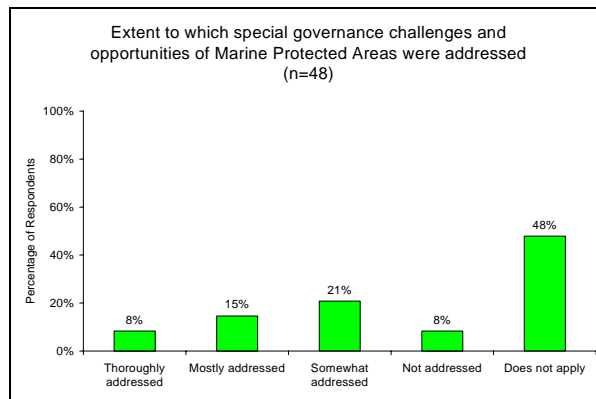
Finding 7: Issues related to the Marine cross-cutting theme were perceived by the majority of respondents as not being pertinent to the sessions they attended and for the responses that were noted, respondents were equally divided on whether or not issues were adequately addressed.

The majority of workshop questionnaire respondents identified the following marine issues as not pertinent to the sessions they attended. An equal number of respondents indicated that the issues were largely addressed or partially/incompletely addressed:

- Protecting marine biodiversity beyond national jurisdiction (see Exhibit 3.8)
- Integrated coastal management principles applicable to Marine Protected Areas governance (see Exhibit 3.9)
- The management and economic sustainability of Marine Protected Areas through partnerships with the tourism sector (see Exhibit 3.10)
- The creation of High Seas Protected Areas (see Exhibit 3.11).

Special governance challenges and opportunities of Marine Protected Areas represented the only cross-cutting issue that was perceived by the majority of respondents (50% or more) 51j12g is0.98 0 0 10.98 308.3174

Exhibit 3.12 Governance Challenges and Opportunities of Marine Protected Areas



Finding 8: World Heritage issues were perceived as having been partially addressed.

World Heritage issues were not perceived as being pertinent to the sessions attended by more than 38% of all workshop questionnaire respondents. Fewer than 28% of respondents thought the special governance challenges and opportunities of internationally designated areas including World Heritage were addressed. Over 32% felt these issues had been somewhat or inadequately addressed (see Exhibit 3.13). With respect to the special governance challenges and opportunities of international environmental conventions, more than 36% perceived the coverage provided as adequate to a limited extent. Only 20% thought this issue to have been largely addressed (see Exhibit 3.14). Similar results were obtained with respect to the implications and impacts of global and/or regional governance: 36% felt this was only somewhat or not addressed, compared with 26% who thought this issue was largely to thoroughly addressed (see Exhibit 3.15).

Exhibit 3.13 Governance Challenges and Opportunities of World Heritage Areas

Exhibit 3.14 Governance Challenges and Opportunities in International Environmental Conventions

Extent to which the specia

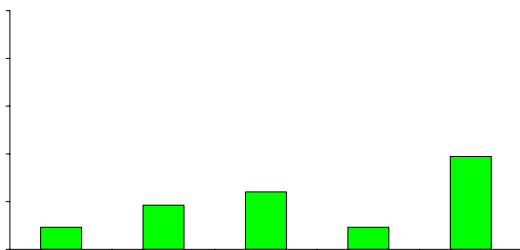
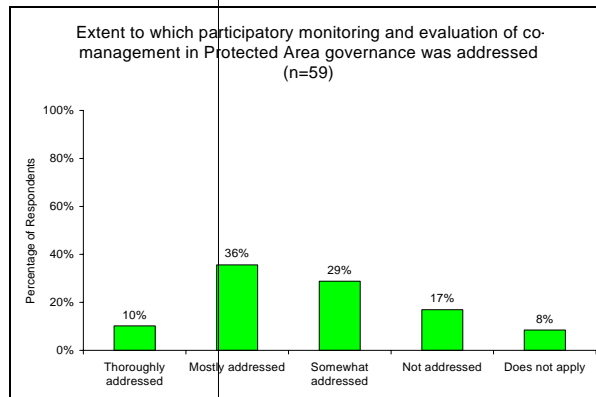


Exhibit 3.18 Participatory Monitoring and Evaluation



3.3 Profile of Workshop Stream III Participants

The following section presents information relative to the description of the workshop participants. Exhibit 3.19 and 3.20 provides the sex ratio and affiliation of workshop participants; Exhibits 3.21 and Exhibits 3.22 describe the respective professional qualifications of the participants and the region in which they work; Exhibit 3.23 details the approximate level of attendance and Exhibit 3.24 provides an overview of what participants attended.

Exhibit 3.19 Sex Ratio of Workshop Participants

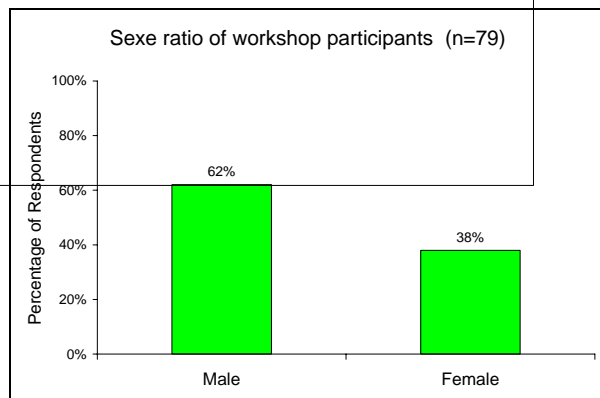


Exhibit 3.20 Affiliation of Workshop Participants

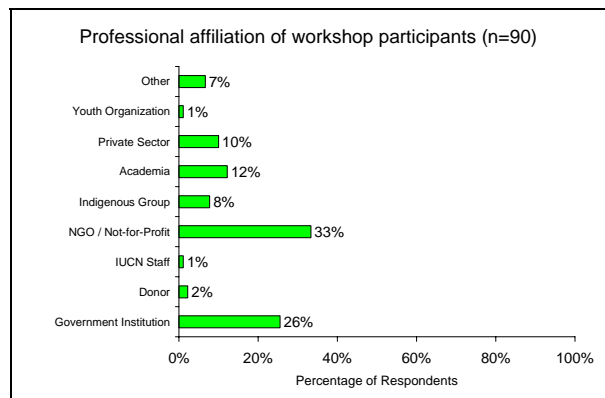


Exhibit 3.21 Protected Area versus Non-Protected Area Professionals

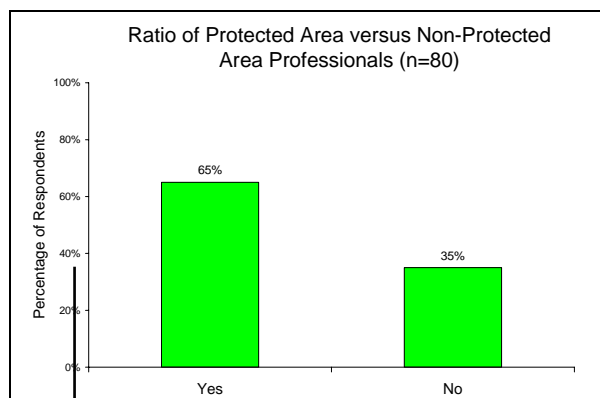
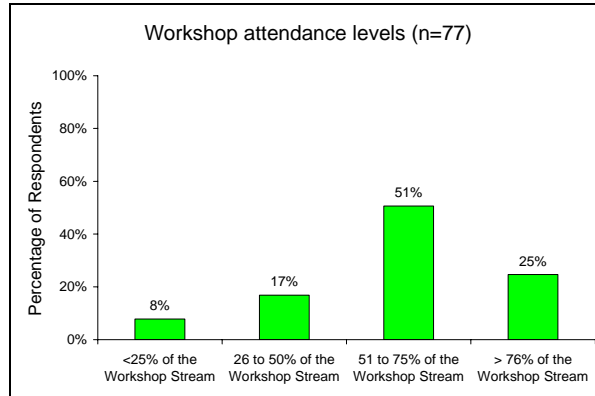


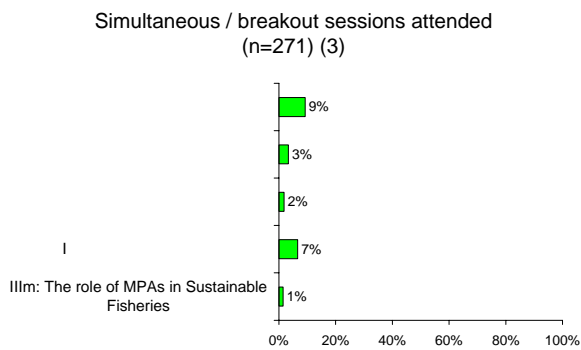
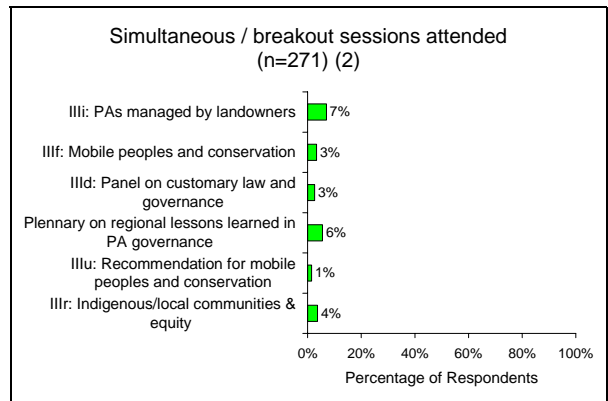
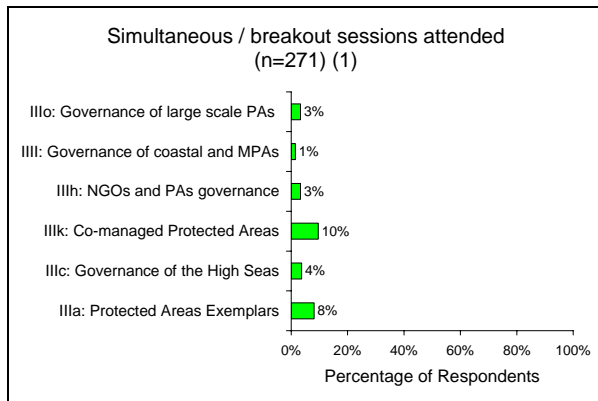
Exhibit 3.22 WCPA Regional Representation of Workshop Participants

Exhibit 3.23 Level of Attendance



The following graphics, Exhibit 3.24, provides an overview of the simultaneous / breakout sessions attended by workshop participants.

Exhibit 3.24 Sessions / Working Groups Attended



4. Short Course Results

The following section presents the results of the short course evaluation on Evaluating Governance followed by comments that were noted by participants.

4.1 Evaluating Governance

