

World Parks Congress Evaluation

Individual Workshop Stream Evaluation Reports



Workshop I: Linkages in Landscape and Seascape



Prepared by IUCN and
Universalia Management Group

February 2004

A c r o n y m s

AP	Areas Protegidas / Aires Protégées (PA in English)
IUCN	The World Conservation Union
NGO	Non-Governmental Organization
PA	Protected Area
WCPA	

Contents

1. Introduction	1
2. Overall Workshop Evaluation Results	2
2.1 Overview of Workshop Streams	2
3. Specific Workshop Evaluation Results for Workshop Stream I	11
3.1 Workshop I Objectives	11
3.2 Workshop I Practical Applications	12
3.3 Workshop I Cross-Cutting Themes	13
3.4 Profile of Workshop Stream I Participants	16

Exhibits

Exhibit 2.1 Attendance to Workshop Stream	2
Exhibit 2.2 Organization of the Workshop Streams	3
Exhibit 2.3 Simultaneous Breakout Sessions	3
Exhibit 2.4 Workshop Objectives	4
Exhibit 2.5 Workshop Contents	4
Exhibit 2.6 Key Issues in Workshop Stream	5
Exhibit 2.7 Workshop Effectiveness in Identifying Key Challenges and Issues	5
Exhibit 2.8 Level of Debate to Address Key Issues	5
Exhibit 2.9 Workshop Stream Recommendations' Effectiveness in Addressing Key Issues	5
Exhibit 2.10 Effectively Chaired Workshops	6
Exhibit 2.11 Resource Person Contributions	6
Exhibit 2.12 Knowledge of Topics Discussed	7
Exhibit 2.13 Workshop Relevance	7
Exhibit 2.14 Knowledge Usefulness for my Organization	7
Exhibit 2.15 Networking Opportunities	7
Exhibit 2.16 Contributions to the Durban Accord and Action Plan	9
Exhibit 2.17 Contributions to the Convention on Biological Diversity	9
Exhibit 2.18 Contributions to the Advancement of the Protected Areas Agenda	10
Exhibit 2.19 Meeting Expectations	10
Exhibit 2.20 Added Value to the World Parks Congress	10
Exhibit 3.1 Defining Key Aspects of Linkages	11
Exhibit 3.2 Identifying Practical Aspects of Linkages	11
Exhibit 3.3 Role of Linkages in Strategic Planning and Adaptive Management	12
Exhibit 3.4 Identifying Stakeholders Involved in Linkages	12

Exhibit 3.5	The Importance of Managing Protected Areas in the Context of Linkages	12
Exhibit 3.6	Planning Ecological Linkages in the Landscape & Seascape	13
Exhibit 3.7	Protecting Landscapes & Seascapes	13
Exhibit 3.8	Understanding Cultural Linkages	13
Exhibit 3.9	Dealing with Economic Linkages	13
Exhibit 3.10	Marine Management Techniques	14
Exhibit 3.11	Guidelines to Establish Marine No-Take Reserves	14
Exhibit 3.12	Large Marine Ecosystems	14
Exhibit 3.13	World Heritage Theme	14
Exhibit 3.14	The Roles of Communities in Protected Landscapes & Seascapes	15
Exhibit 3.15	Issues Relevant to Human-Wildlife Conflicts	15
Exhibit 3.16	Issues Relevant to Mobile Peoples	15
Exhibit 3.17	Sex Ratio of Workshop Participants	16
Exhibit 3.18	Affiliation of Workshop Participants	16
Exhibit 3.19	Protected Area versus Non-Protected Area Professionals	16
Exhibit 3.20	WCPA Regional Representation of Workshop Participants	16
Exhibit 3.21	Level of Attendance	16
Exhibit 3.22	Sessions / Working Groups Attended	16

1. Introduction

Seven major Workshop Streams and their associated sub-sessions provided a major part of the substantive technical discussions at the World Parks Congress in Durban in September 2003. For three full days close to 2,800 participants attended seven major workshop streams and the many associated sub-sessions and short courses. The streams wthree 9268three 9268

sessions in order to reduce overlap and improve the achievement of results. The majority

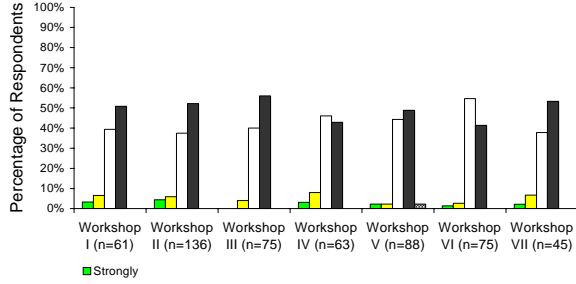
More than three-quarters of workshop questionnaire respondents indicated that key issues and lessons learned were well articulated in their respective workshop stream (see Exhibit 2.6). Similarly, over 80% observed that the workshop stream(s) they attended adequately identified key challenges and issues (see Exhibit 2.7), 30% indicated that the level of debate was adequate (see Exhibit 2.8), and

Finding 2: Overall work

Exhibit 2.12 Knowledge of Topics Discussed

Exhibit 2.13 Workshop Relevance

Extent to which questionnaire respondents agree that the workshop(s) enhanced their knowledge/understanding of the topics discussed



to bear in the workshop sessions, proved to be the most significant strength of the workshop streams according to the respondents

Extent to which questionnaire respondents agree that the workshops presented a good opportunity to network with others

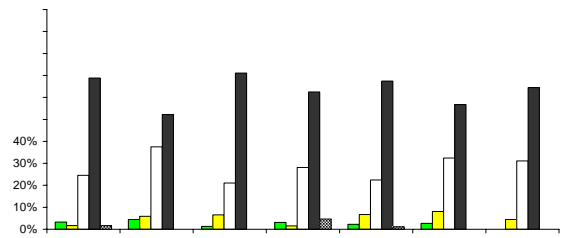
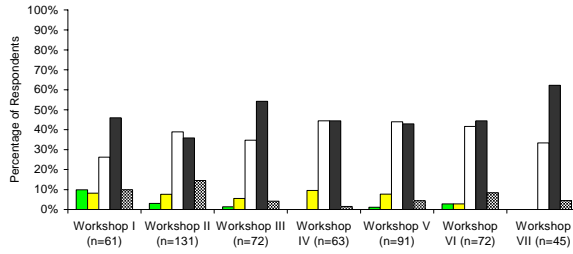


Exhibit 2.16 Contributions to the Durban Accord and Action Plan

Exhibit 2.17 Contributions to the Convention on Biological Diversity

Extent to which questionnaire respondents agree that the outputs of the workshop streams represent a potentially significant contribution to the Durban Accord and Action Plan



WPC Evaluation Workshop Stream I Report

3. Specific Workshop Evaluation Results for Workshop Stream I

The following sections present findings from the workshop stream I. The following sections present findings from the workshop stream I.

Exhibit 3.3 Role of Linkages in Strategic Planning and Adaptive Management

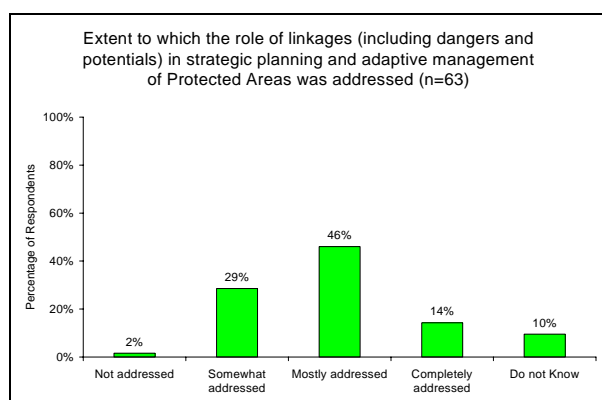


Exhibit 3.4 Identifying Stakeholders Involved in Linkages

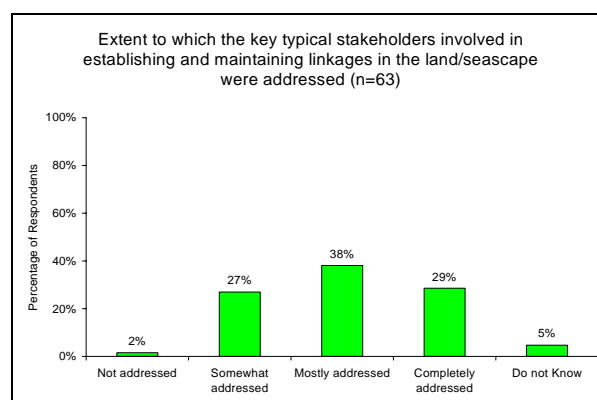
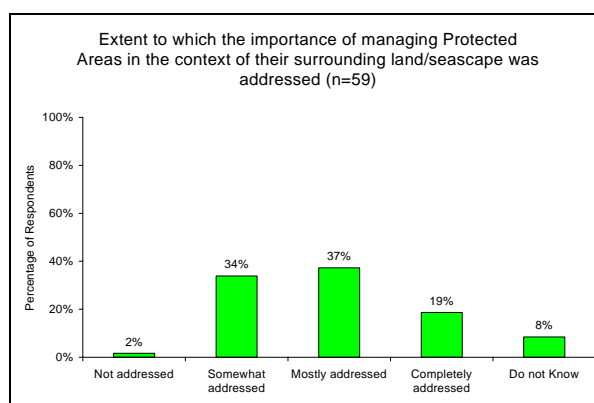


Exhibit 3.5 The Importance of Managing Protected Areas in the Context of Linkages



3.2 Workshop I Practical Applications

Finding 7: The extent to which practical applications were adequately developed during simultaneous sessions varied considerably.

According to workshop questionnaire respondents, some of the practical applications related to the Linkages in the Landscape and Seascape stream were better developed than others. Questionnaire results suggest that 56% of respondents thought that the workshop had been mostly successful in developing an understanding of cultural linkages to improve the links between Protected Areas and the land/seascape (see Exhibit 3.8). Similarly, close to half of respondents indicated that the workshop had mostly demonstrated how to protect land/seascapes (see Exhibit 3.7). With respect to economic linkages and planning ecological linkages however, questionnaire results suggest greater ambivalence. When asked to rate the extent to which practical applications had been developed on how to deal with economic linkages related to landscape management, fewer than 37% believed that this had been mostly or thoroughly developed (see Exhibit 3.9). Similarly, only 39% reported that the workshop had mostly or thoroughly developed practical applications relating to how to plan ecological linkages in land/seascape (see Exhibit 3.6).

Exhibit 3.6 Planning Ecological Linkages in the Landscape & Seascape

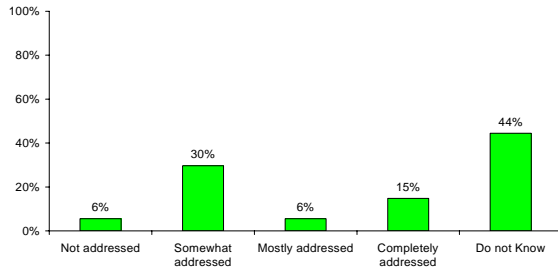
Exhibit 3.7 Protecting Landscapes & Seascapes



Exhibit 3.10 Marine Management Techniques

Exhibit 3.11 Guidelines to Establish Marine No-Take Reserves

Extent to which the Marine cross-cutting theme was addressed with respect to management techniques including best practices of seascapes and corridor planning (n=54)



3.4 Profile of Workshop Stream I Participants

The following section presents information relative to the description of the workshop participants. Exhibit 3.17 and 3.18 provides the sex ratio and affiliation of workshop participants; Exhibits 3.19 and Exhibits 3.20 describe the respective professional