

# Species

ISSUE 63

## 2022 Report of the IUCN Species Survival Commission and Secretariat



The IUCN Species Survival Commission (SSC) is a global body of experts that provides scientific advice on the conservation of threatened species and their habitats. The SSC is a part of the IUCN, which is a global conservation organization. The SSC is composed of experts from various countries and disciplines, including biology, ecology, and conservation. The SSC is responsible for assessing the conservation status of species and for providing advice on how to conserve them. The SSC is also responsible for developing and implementing conservation plans for threatened species and their habitats. The SSC is a key organization in the field of conservation and is an important part of the IUCN.

Farm households, the SSC Conservation Committee was established, which is a range of rural livelihoods. The SSC Conservation Committee is a global body of experts that provides scientific advice on the conservation of threatened species and their habitats. The SSC is a part of the IUCN, which is a global conservation organization. The SSC is composed of experts from various countries and disciplines, including biology, ecology, and conservation. The SSC is responsible for assessing the conservation status of species and for providing advice on how to conserve them. The SSC is also responsible for developing and implementing conservation plans for threatened species and their habitats. The SSC is a key organization in the field of conservation and is an important part of the IUCN.

**ASSESS:** Under all farm households, the SSC Conservation Committee was established, which is a range of rural livelihoods. The SSC Conservation Committee is a global body of experts that provides scientific advice on the conservation of threatened species and their habitats. The SSC is a part of the IUCN, which is a global conservation organization. The SSC is composed of experts from various countries and disciplines, including biology, ecology, and conservation. The SSC is responsible for assessing the conservation status of species and for providing advice on how to conserve them. The SSC is also responsible for developing and implementing conservation plans for threatened species and their habitats. The SSC is a key organization in the field of conservation and is an important part of the IUCN.

**PLAN:** The SSC Conservation Committee was established, which is a range of rural livelihoods. The SSC Conservation Committee is a global body of experts that provides scientific advice on the conservation of threatened species and their habitats. The SSC is a part of the IUCN, which is a global conservation organization. The SSC is composed of experts from various countries and disciplines, including biology, ecology, and conservation. The SSC is responsible for assessing the conservation status of species and for providing advice on how to conserve them. The SSC is also responsible for developing and implementing conservation plans for threatened species and their habitats. The SSC is a key organization in the field of conservation and is an important part of the IUCN.

**ACT:** The SSC Conservation Committee was established, which is a range of rural livelihoods. The SSC Conservation Committee is a global body of experts that provides scientific advice on the conservation of threatened species and their habitats. The SSC is a part of the IUCN, which is a global conservation organization. The SSC is composed of experts from various countries and disciplines, including biology, ecology, and conservation. The SSC is responsible for assessing the conservation status of species and for providing advice on how to conserve them. The SSC is also responsible for developing and implementing conservation plans for threatened species and their habitats. The SSC is a key organization in the field of conservation and is an important part of the IUCN.

The network of rural livelihoods is a key organization in the field of conservation and is an important part of the IUCN. The network is composed of experts from various countries and disciplines, including biology, ecology, and conservation. The network is responsible for assessing the conservation status of species and for providing advice on how to conserve them. The network is also responsible for developing and implementing conservation plans for threatened species and their habitats. The network is a key organization in the field of conservation and is an important part of the IUCN.

**NETWORK:** The network of rural livelihoods is a key organization in the field of conservation and is an important part of the IUCN. The network is composed of experts from various countries and disciplines, including biology, ecology, and conservation. The network is responsible for assessing the conservation status of species and for providing advice on how to conserve them. The network is also responsible for developing and implementing conservation plans for threatened species and their habitats. The network is a key organization in the field of conservation and is an important part of the IUCN.

**COMMUNICATE:** The network of rural livelihoods is a key organization in the field of conservation and is an important part of the IUCN. The network is composed of experts from various countries and disciplines, including biology, ecology, and conservation. The network is responsible for assessing the conservation status of species and for providing advice on how to conserve them. The network is also responsible for developing and implementing conservation plans for threatened species and their habitats. The network is a key organization in the field of conservation and is an important part of the IUCN.

S a l - a l a e r m m a r z l a a -  
e a l e a l e - e a r a e b  
e a h f n a m l a l a S S C . F a w l ,  
l a r e a l a l - a l a e r a l  
l a l e l l e a h e a l .

---

**Title of the SSC Group**

---

**Photograph(s) of the Chair / Co-Chairs**

---

**Group information**

l l ( l ) 2.76 ( r ) h 4 - 3 . 1 . 5 0 9 . T m 1 3 . 4 h - 1 . 1 9 7 ( ) - 4 . 9 4 ( ) 4 ( ) - 4 7 . 9 ( 1 . 1 9 7 ( ) - 4 . 9 4 ) - 2 9 ( ) - 4 9 8 ( ) 9 . 1 ( . ) 1 . 5 ( , V ) - 1 . . 2 ( ) 3 . 5 ( 0 7 T / C ) -

Committee

Center for Species Survival

---

---

---

---

---



# 2022 Report

# IUCN SSC Lagomorph Specialist Group

<b>CO-CHAIR</b> Hayley Lanier Sam Noble Museum, University of Oklahoma, Norman, Oklahoma, US	<b>CO-CHAIR</b> Consuelo Lorenzo Ecología y Evolución de la Serpiente de la Universidad de la Sabana, Cali, México	<b>RED LIST AUTHORITY COORDINATOR</b> Andrew Smith Smithsonian Serpentaria, Washington, DC, USA	<b>NUMBER OF MEMBERS</b> 41
---	--	--	--------------------------------

### Mission statement

The mission of the IUCN Lagomorph Specialist Group is to assess the conservation status of lagomorphs and to provide advice on their conservation.

### Projected impact 2021–2025

During 2021–2025, the Lagomorph Specialist Group will assess the conservation status of lagomorphs and provide advice on their conservation.

**T-011** Implement a conservation plan for the critically endangered Chaco Lepus. Status: Ongoing

**T-012** Strengthen conservation of the critically endangered Hispid Hare (Caprolagus hispidus). Status: Ongoing

**T-014** Assess the conservation status of the critically endangered Ochotona chrysochaeta. Status: Ongoing

**T-016** Monitor the conservation status of Amam Rabb ( ).

### Targets 2021–2025

#### ASSESS

**T-005** Assess the conservation status of the critically endangered Amam Rabb (Nesolagus timminsi) in Vietnam. Status: Ongoing

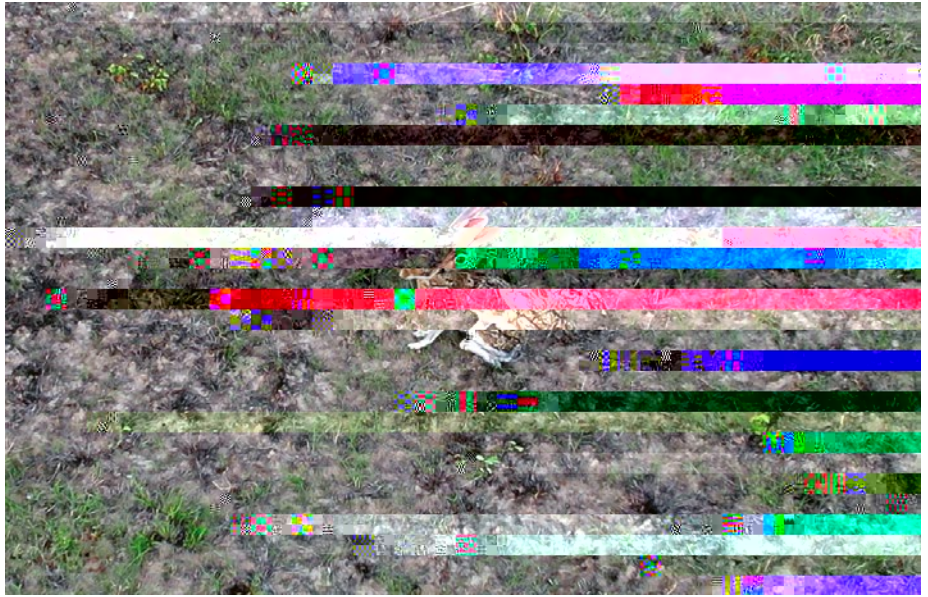
**T-006** Evaluate the conservation status of the critically endangered Sanjia Rabb (Nesolagus netscheri) in China. Status: Ongoing

**T-008** Gather data on the conservation status of the critically endangered Amam Rabb (N. timminsi). Status: Ongoing





*Lepus flavigularis* ♀♀ r a b b ♂♂ m a ♂♂



♀♀ r a b b ♂♂ m a ♂♂  
♀♀ r a b b (*Romerolagus diazi*) w h e m  
P h o t o : Therya Notes

N m b r S S C n m b r r e : 1  
R e r : W h b a  
' r e r l a T a m a W h e - e  
J a r a b b (*Lepus altamirae*) a e r a e r  
r f m e r r , b A r a S a  
C a b a e f a l O a G e r r a - R a ,  
Therya Notes, e e e a r a  
e e a r h f a a m a l e m a -  
Lepus m .

**COMMUNICATE**  
**Communication**

**T-033 Improve habitat management and public education for Volcano Rabbit (*R. diazi*). (KSR 13)**

N m b r S S C n m b r ' e e l a a  
e e e r e a a e a m  
f : 1

R e r : T e r e r a e -  
m l l V a R a b b w a e e a e  
r e r a w h b a a  
e Therya Notes, a h e b a m -  
m l b r a e a l e e a r b r f m l e  
r f a a A r G e r f . l w a  
b f a a e e l e e e , l  
r e r e m l a e l e m i r a l e l e  
e e a l w h l e r a l a l  
f e r m a l e r e l e h a b a .

**T-045 Generate publications on Lagomorpha biology and conservation for the general public. (KSR 13)**

N m b r r l a m m l a a l m a e r a -  
r b e l e a a e a a m  
f : 1

R e r : O l e e l e e l e ,  
H a e L a e r a l L R e a e e l e  
a r a e a e r a l e L a n t r h a  
a n g r l e ' H a l l a l e  
M a m m a M e a l e h A n g r a'  
e e b Springer. l e l e a r a l e  
e e l e e e r e a r l l a l l e  
a n t r h M e a l e h A n g r a .  
S e h a e r a a a 27 e e  
R a b b a l J a r a b b a e l e l e -  
e . E a h h a e r r e r a e e  
m a m m a a l b , l a a m ,  
a a l e , h e l e e e ,  
e f a l a l e e e r e l e e e ,  
h a b a , e , n r a , a l l h a r . T e  
e e m l a l e a l m a l e r e l  
m a m m a a l e h a e r  
e e a r h a l l e r a l a e e e .  
T e h a e r l e a r b a l m a , a  
l l r a h l e a l m a a e a  
h a b a a l a e e e r a e .

**Acknowledgements**

V e h a l R : w , r f l r a  
l l e a r h a r l e m l O m e m  
O l a R a b b l e .

**Summary of achievements**

Total number of targets 2021–2025: 42

Geographic regions: 9 C a b a , 5 A r a ,  
16 A n g r a , 13 A a , 1 E f e

**Actions during 2022:**

- A e : 6 (KSR 5, 6)
- N r : 1 (KSR 2)
- O m m l a e : 2 (KSR 13)

**Overall achievement 2021–2025:**

