

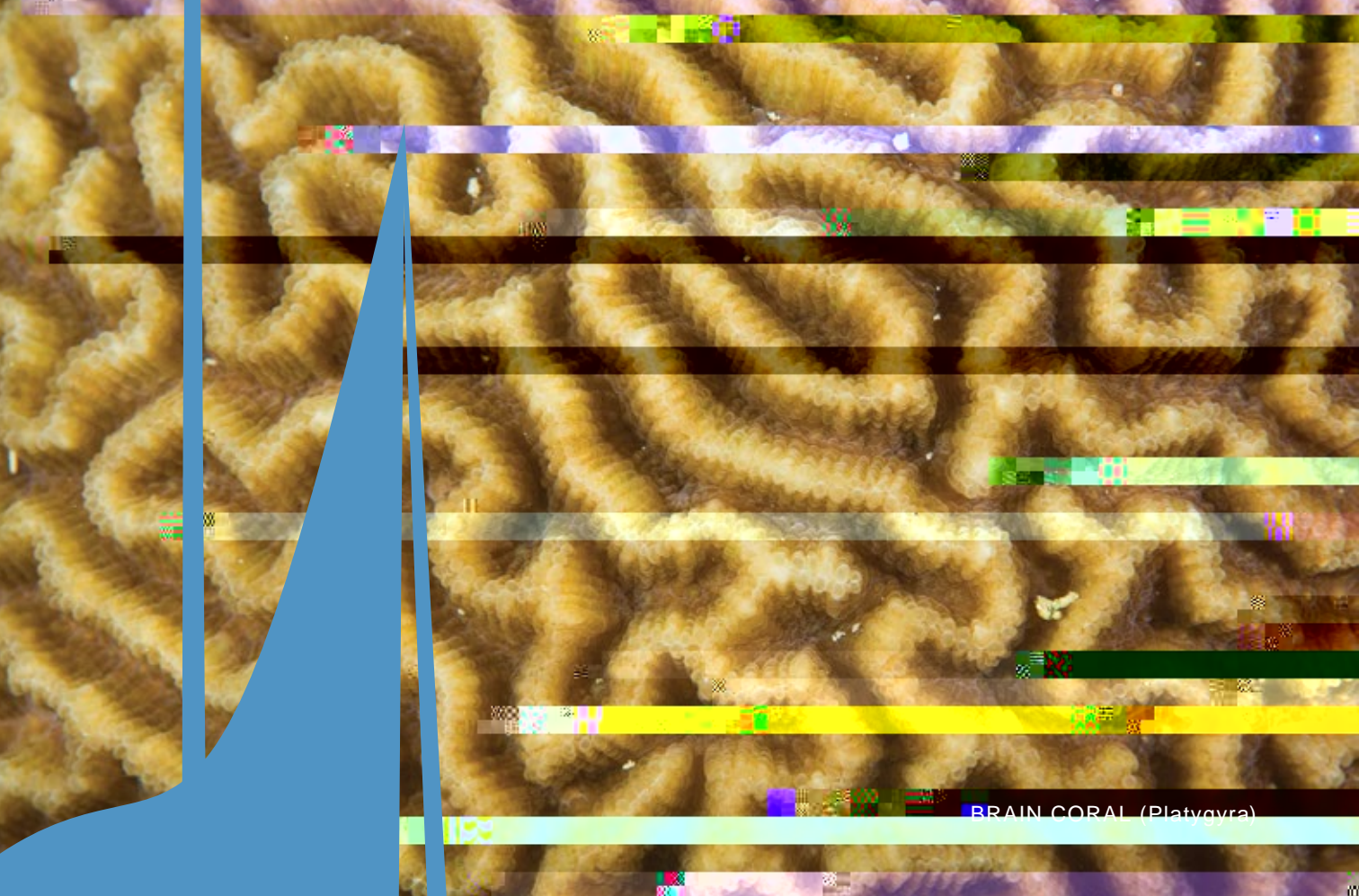
JUVENILE YELLOW BOXFISH (*Ostracion cubicus*)




MARRIOTT RESORT
PHUKET
MERLIN BEACH

PHUKET MARRIOTT RESORT & SPA,
MERLIN BEACH

HOUSE REEF MARINE GUIDE



BRAIN CORAL (*Platygyra*)

PHUKET MARRIOTT RESORT & SPA,
MERLIN BEACH

MARINE GUIDE

ecosystem
productive
WRRXULV

As part of our new 5-year environmental strategy, we have incorporated coral reef
integration and coastal management plan. Mangrove forests and coral reefs are the most
productive in the marine environment, and thus must be kept healthy in order for marine systems

This identification guide to the marine life on the hotel reef
was created by Sirachai Arunrungstichai at the Marriott Merlin Beach reef

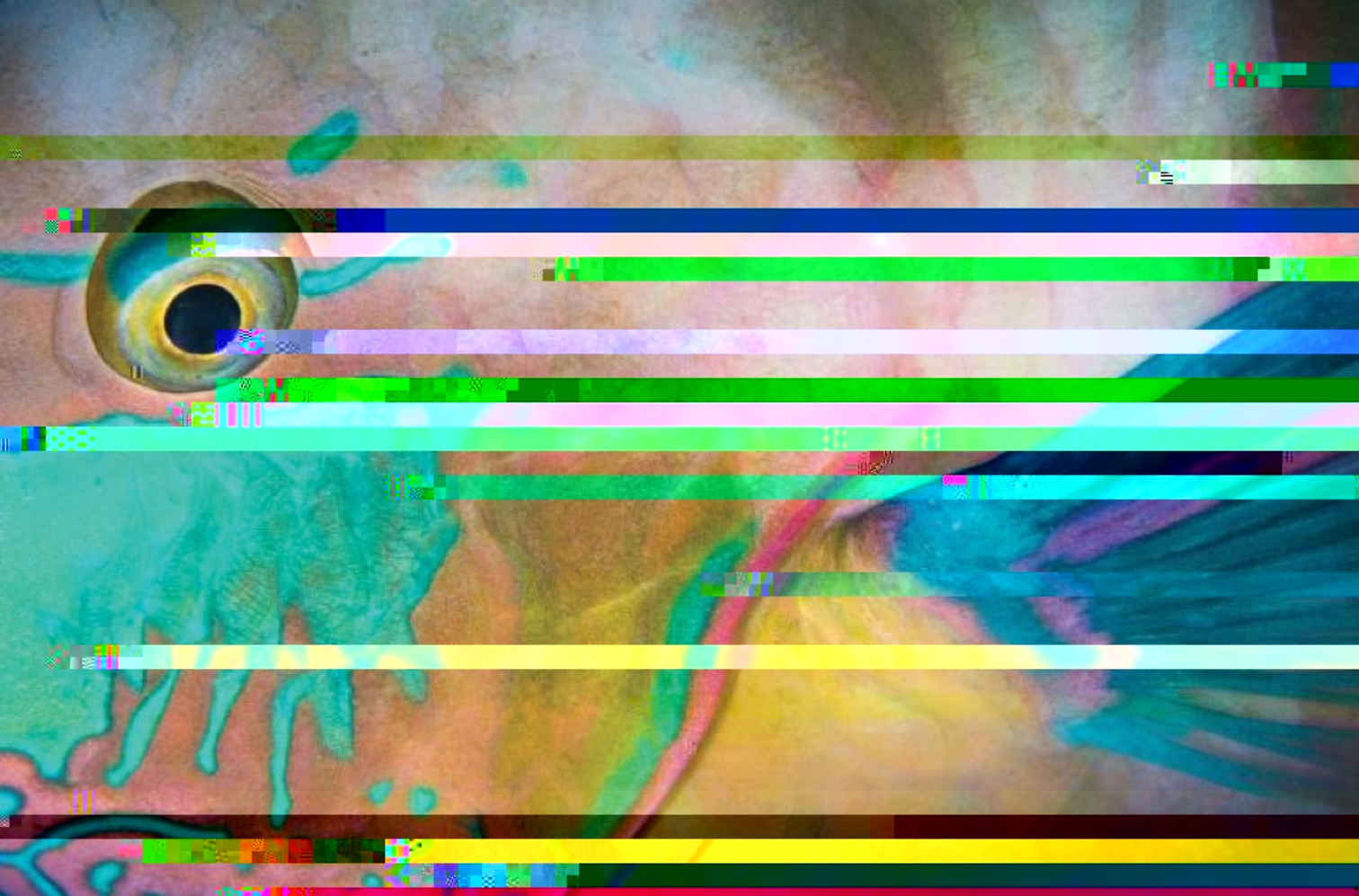


TABLE OF CONTENTS:

PART 1 : IDENTIFICATION

| | |
|----------------------|----|
| Fish..... | 4 |
| Coral..... | 18 |
| Bottom Dwellers..... | 21 |

PART 2: CONSERVATION

PHUKET MARRIOTT RESORT & SPA,
MERLIN BEACH



GOLDBAND FUSILIER (*Pterocaesio chrysozona*)

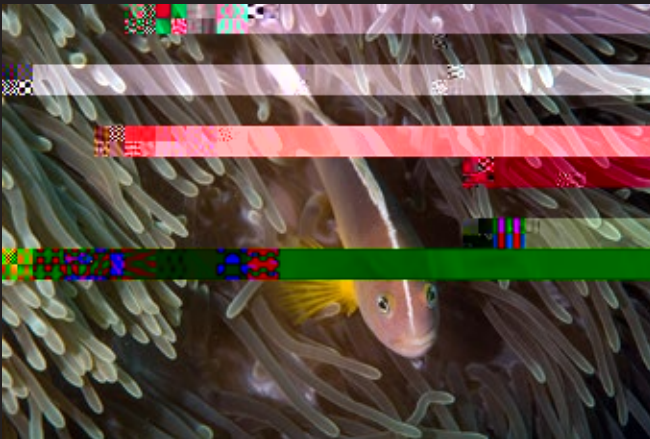
PART 1 IDENTIFICATION

PHUKET MARRIOTT RESORT & SPA,
MERLIN BEACH

HOUSE REEF
MARINE GUIDE



FALSE CLOWN ANEMONEFISH (*Amphiprion ocellaris*)



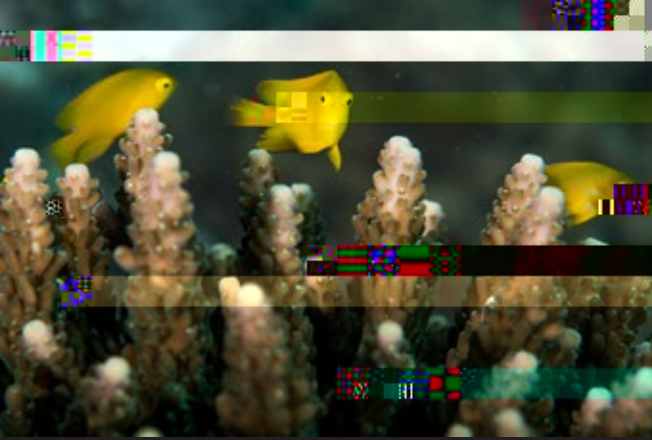
SKUNK ANEMONEFISH (*Amphiprion akallopisos*)

DAMSELFISHES (POMACENTRIDAE)

28RIWKHPRVWFRPPR0JRXSVR1KROUHHIZWK
RYHUVSHFLHV2UOGZGH7KHPRVWUHFJRJQHGMK
ZWKL0KLVDPLOLVWKHZ0ONR0R0ZKRU
0PREVK'DPVHOM'KHVUD0HL0LHIURPDIHZ
centimeters to 30 cm, varying immensely in color but
maintaining a similar arrow like body shape.

PHUKET MARRIOTT RESORT & SPA,
MERLIN BEACH

**HOUSE REEF
MARINE GUIDE**



GOLDEN DAMSEL FISH (*Amblyglyphidodon aureus*)



JEWEL DAMSEL FISH (*Plectroglyphidodon lacrymatus*)



THREE-SPOT DASCYLLUS (*Dascyllus trimaculatus*)



NEON DAMSEL FISH (*Pomacentris pavo*)



OVAL BUTTERFLYFISH (*Chaetodon trifasciatus*)

BUTTERFLYFISHES (CHAETODONTIDAE)

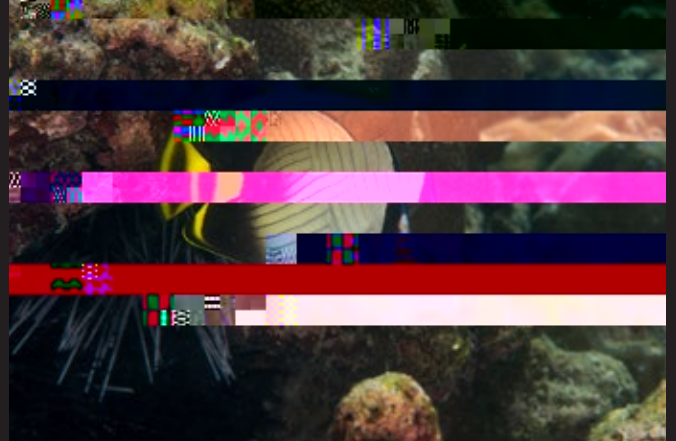
reef is an indicator of reef health. Bright yellow is the featured color in this family, with varying stripes and color patterns, many species have a false 'eyespot' near the tail to confuse predators. The name 'Chaetodont' refers to the bristle like teeth found in all species in the family.

PHUKET MARRIOTT RESORT & SPA,
MERLIN BEACH

HOUSE REEF
MARINE GUIDE



COLLARE BUTTERFLYFISH
(*Chaetodon collare*)



INDIAN VAGABOND BUTTERFLYFISH
(*Chaetodon decussatus*)



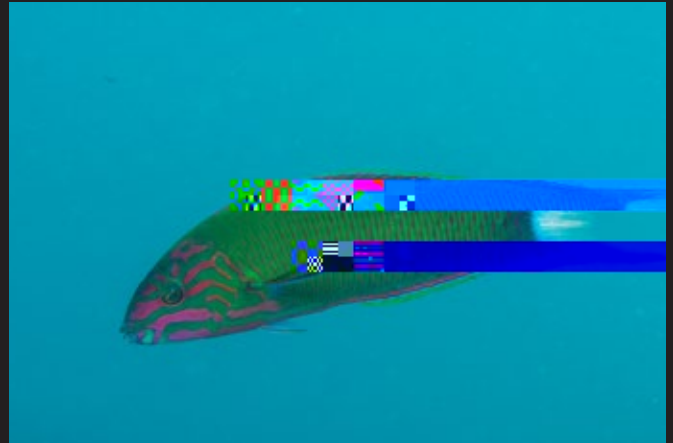
TRIANGULAR BUTTERFLYFISH
(*Chaetodon triangulum*)



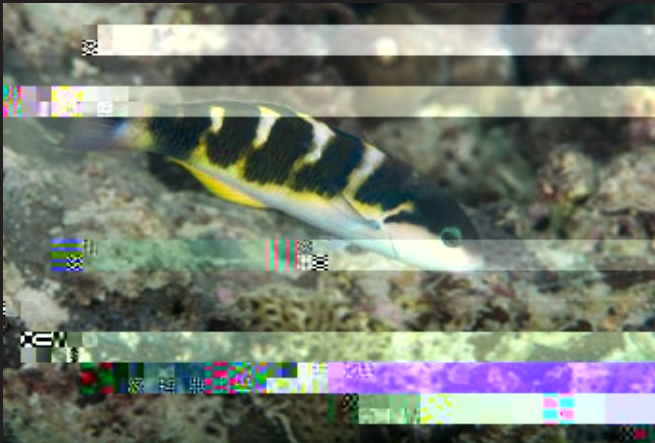
JUVENILE ANDAMAN BUTTERFLYFISH
(*Chaetodon andamanensis*)

WRASSES (LABRIDAE)

feed on worms, sea urchins, and corals, among other animals.



MOON WRASSE (*Thalassomalunare*)



JANSEN'S WRASSE (*Thalassomajansenii*)



BLUESTREAK CLEANER WRASSE (*Labroides dimidatus*)

PHUKET MARRIOTT RESORT & SPA,
MERLIN BEACH

HOUSE REEF
MARINE GUIDE

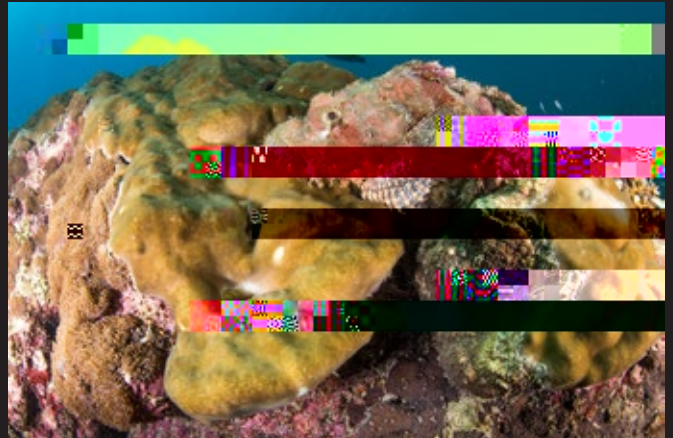
SCORPIONFISH

(SCORPAENIDAE)

\$ GLYHUVH IDPLO\ RI ÌVKHV WKHLU QDPH LV GHULYHG IURP WKHLU YH
DQG DOVR DOORZ WKH ÌVK WR FDPRXÍDJH LQWR WKH UHHI 7KH\ DUH
ÌVK XVLQJ DPEXVK WHFKQLTXHV



JUVENILE LIONFISH (*Pterois volitans*)

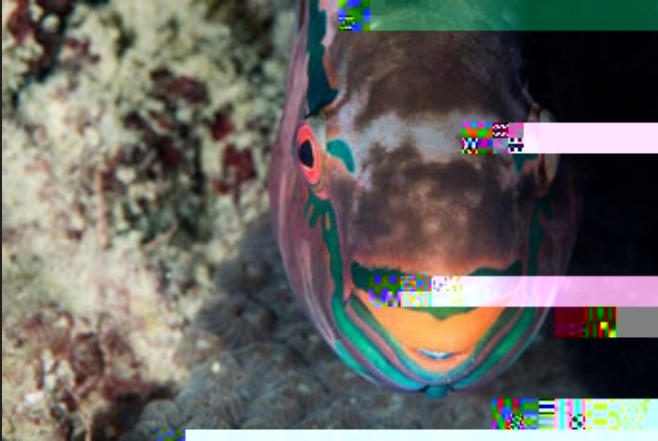


TASSLED SCORPIONFISH (*Scorpaenopsis oxycephala*)

PHUKET MARRIOTT RESORT & SPA,
MERLIN BEACH

HOUSE REEF
MARINE GUIDE

beak-like jaw of fused teeth. They can reach up to 2 meters and they feed on



SURGEONFISHES (ACANTHURIDAE)

Characterized by a razor sharp spine on either side of the tail base, which is often referred to as the scalpel, giving this family their common name. Can be found in reef areas, from 2 meters deep. Fish can range from 20-100cm in size.



POWDER BLUE SURGEONFISH (*Acanthurus leucosternon*)



STRIPED SURGEONFISH (*Acanthurus lineatus*)

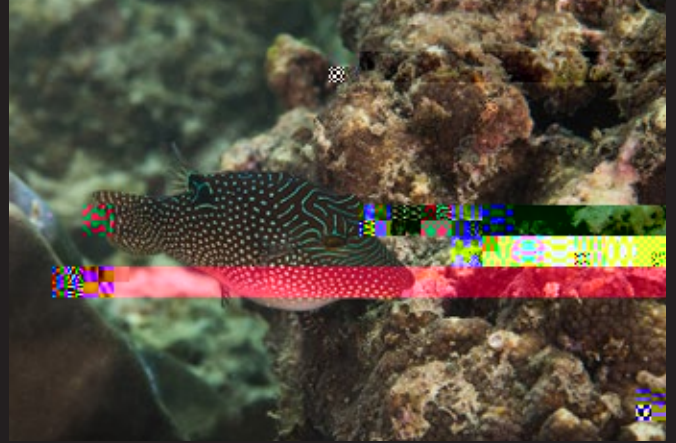


CONVICT TANG (*Acanthurus tristegus*)

YELLOWFIN SURGEONFISH (*Acanthurus xanthopterus*)



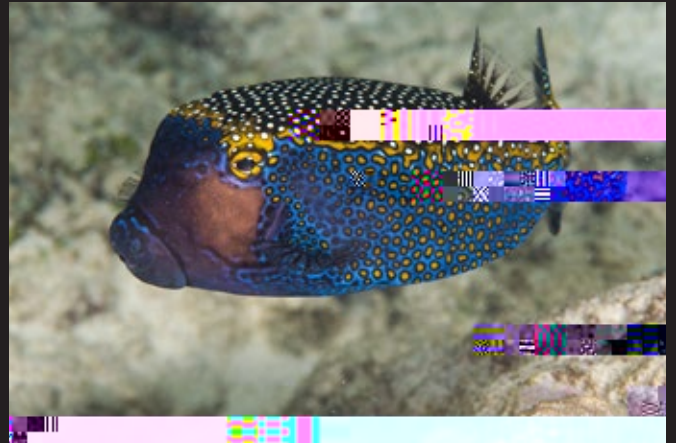
JUVENILE YELLOW BOXFISH (*Ostracion cubicus*)



SPOTTED TOBY (*Canthigaster solandri*)



BLACK BLOTCHED PORCUPINEFISH (*Diodon liturosus*)



SPOTTED TRUNKFISH (*Ostracion meleagris*)

GROUPERS



), 1 * (5 & 2 5 \$ / (Porites lutea)

& \$ 8 / ,) / 2 : (5 & 2 5 \$ /

+ (/ 0 (7 & 2 5 \$ / (Diploastrea heliopora)

% 8 % % / (& 2 5 \$ / (Pterogyra sinuosa)

% 8 % % / (& 2 5 \$ / (Physogyra lichtensteni)

7 2 2 7 + & 2 5 \$ / (Galaxea fascicularis)

E

% ODFN 6HD & XFXPEHU (Holothuria atra)

c

PHUKET M



&RUDO DUH DOVR VXVFHSWLEOH WR SK\VLFDQ GDPDJH
ZDONLQJ RQ WKH UHHI %RDWV WKDW DQFKRU RQ WKH
VQRUNHOLQJ GURS DQFKRUV WKDW FDQ GHVWUR\ FRUD
PRUH WKDQ \HUV WR JURZ WR VXFK VLJHV 2XU WHD
KRWHO JXHVWV DERXW WKHLU HĚHFV RQ FRUDOV DQG
VZLPPLQJ RQO\ DW KLJK WLGH DQG WR EH FDUHIXO ZKH
ÍLSSHUV

:KHQ EURNHQ LQWR PDQ\ SLHFHV ZKHWKHU E\ DQFKRU
IUDJPHQWV ZLOO XVXDOO\ GLH XQOHVV WKH\ DUH TXLFNC
UHHI :KLOH GLYLQJ ZH ZLOO ORRN IRU EURNHQ FRUDO I
HDVLO\ ZHGJHG LQWR KROHV RQ WKH UHHI DQG ZLOO U
WLPH 7KLV LV DQ HDV\ ZD\ WR LQFUHDVH FRUDO FRYHU
ZLWKRXW WKHVH DFWLRQV WKH EURNHQ IUDJPHQWV ZLO

',9(56 `5(3/\$17,1*a %52.(1 &25\$/)5\$*0(176 21 72 7+(5((

CREDIT

An abstract graphic design featuring a complex arrangement of black and white geometric shapes. A large, dark, irregular shape dominates the left side, with a sharp point at the top. To its right, a large, dark, curved shape extends across the middle. A prominent white circle overlaps the dark shapes. Several thin, white lines intersect the composition, including a horizontal line that passes through the center and a vertical line on the left. The background is a light gray, and the overall style is minimalist and modern.

PHUKET MARRIO