





UNIVERSITAS DHARMA AGRI



UMA

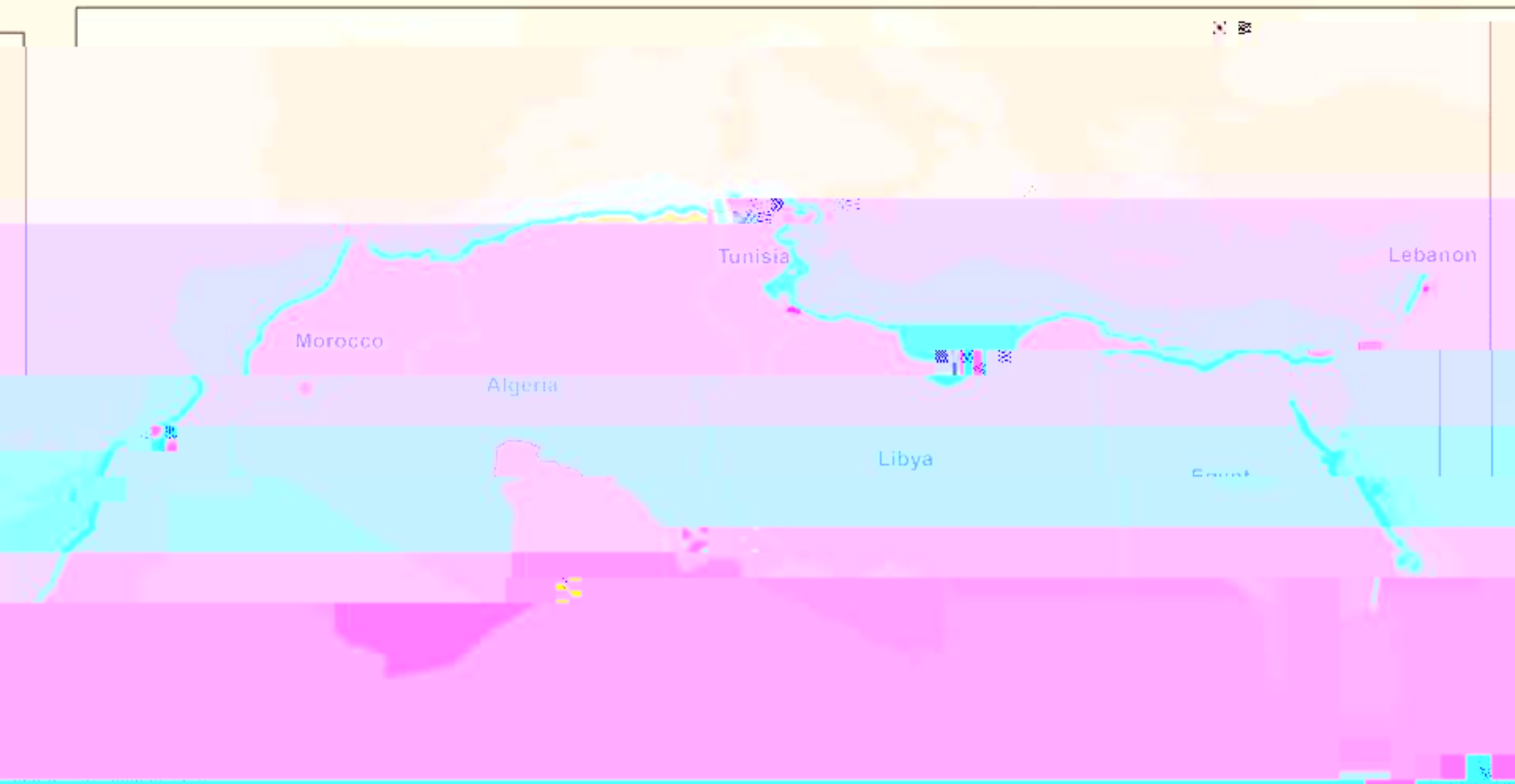


UNIVERSITAS DHARMA AGRI



UMA

Assignment area and OECM case studies



Map developed by IOCM (last modified: 2023)

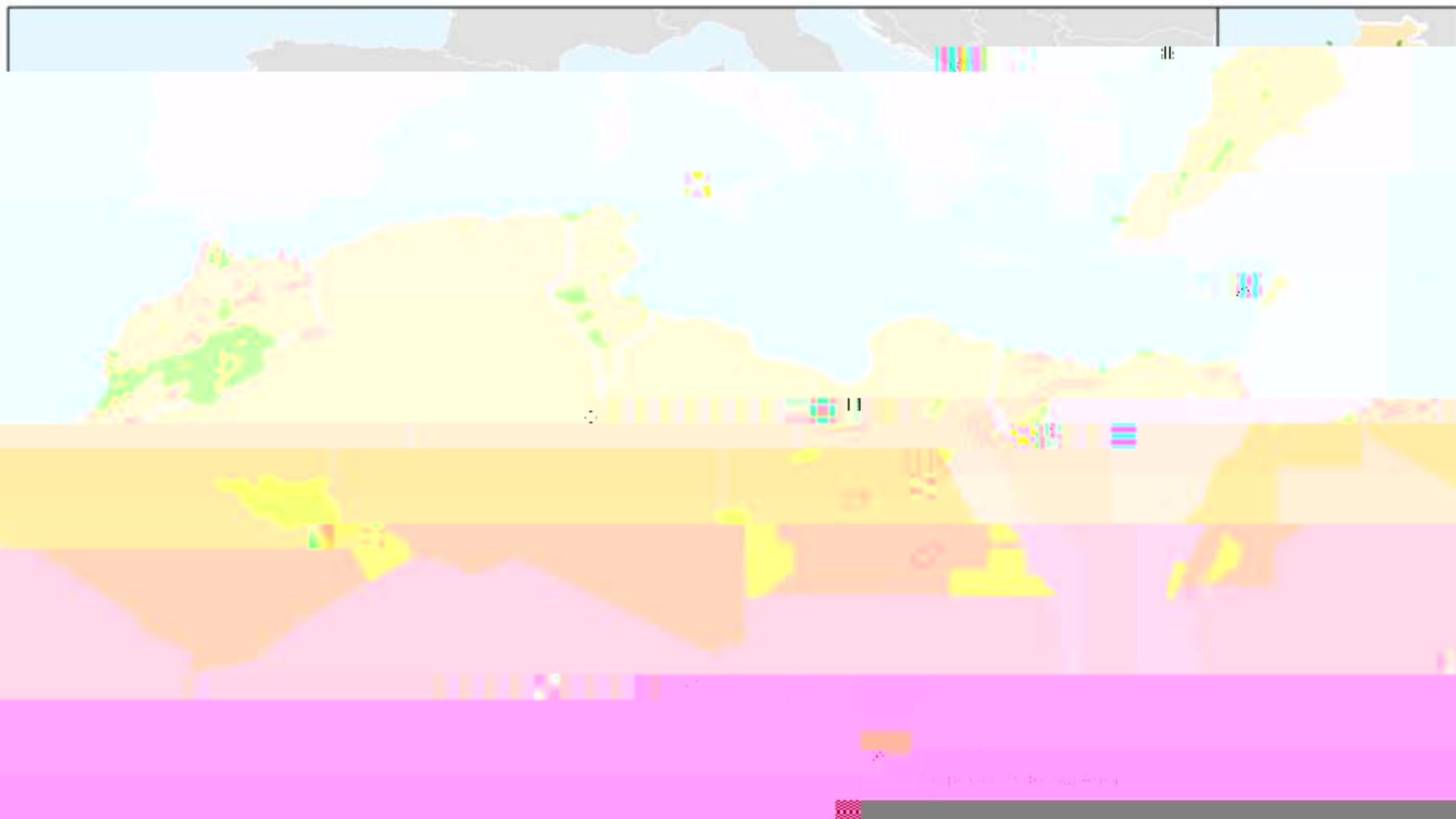
OECM case studies

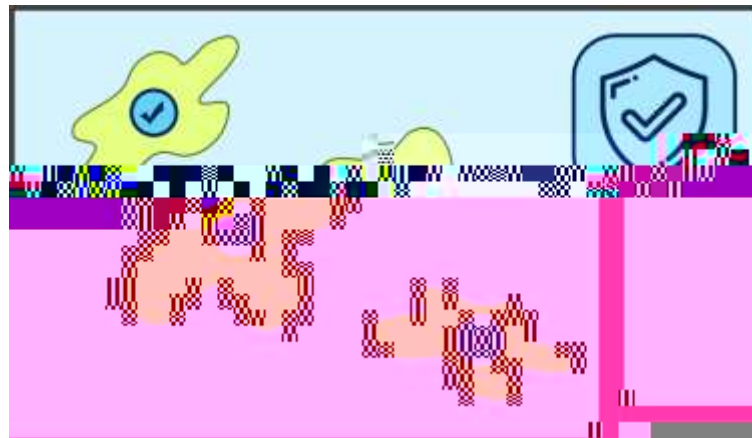
 Zone (EEZ)

The information presented in this map do not imply the expression of any opinion whatsoever on the part of the authors or contributory organisations, editors or publishers concerning the legal status of any country, territory, city area or of its authorities, or concerning the delimitation of its frontiers or boundaries or the designation of its name, frontiers or boundaries.

1

Protected area coverage and designation status





•

•



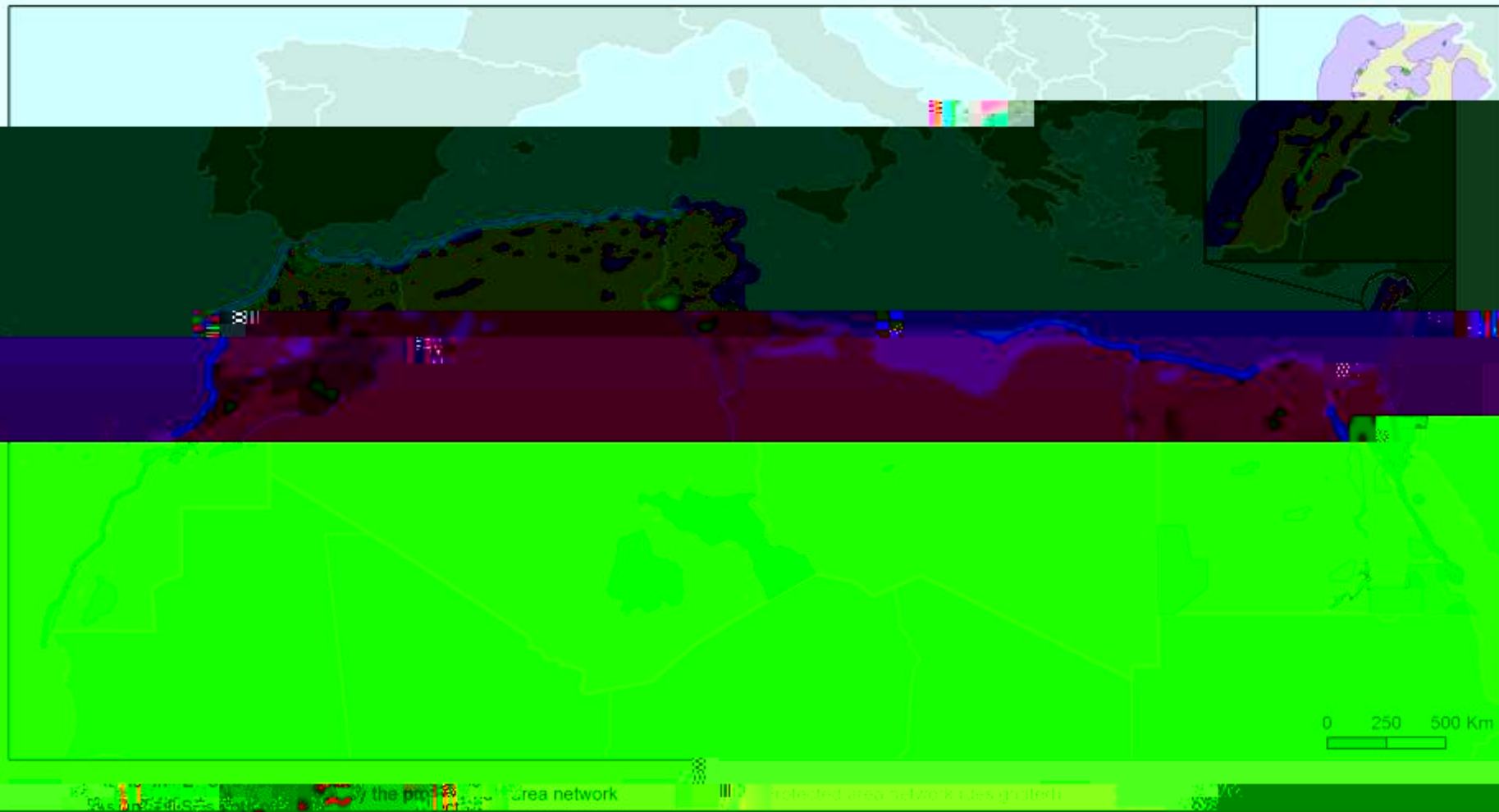
UNIVERSITAS DHARMA AGRI



UMA

2. Environmental Policy for Biodiversity

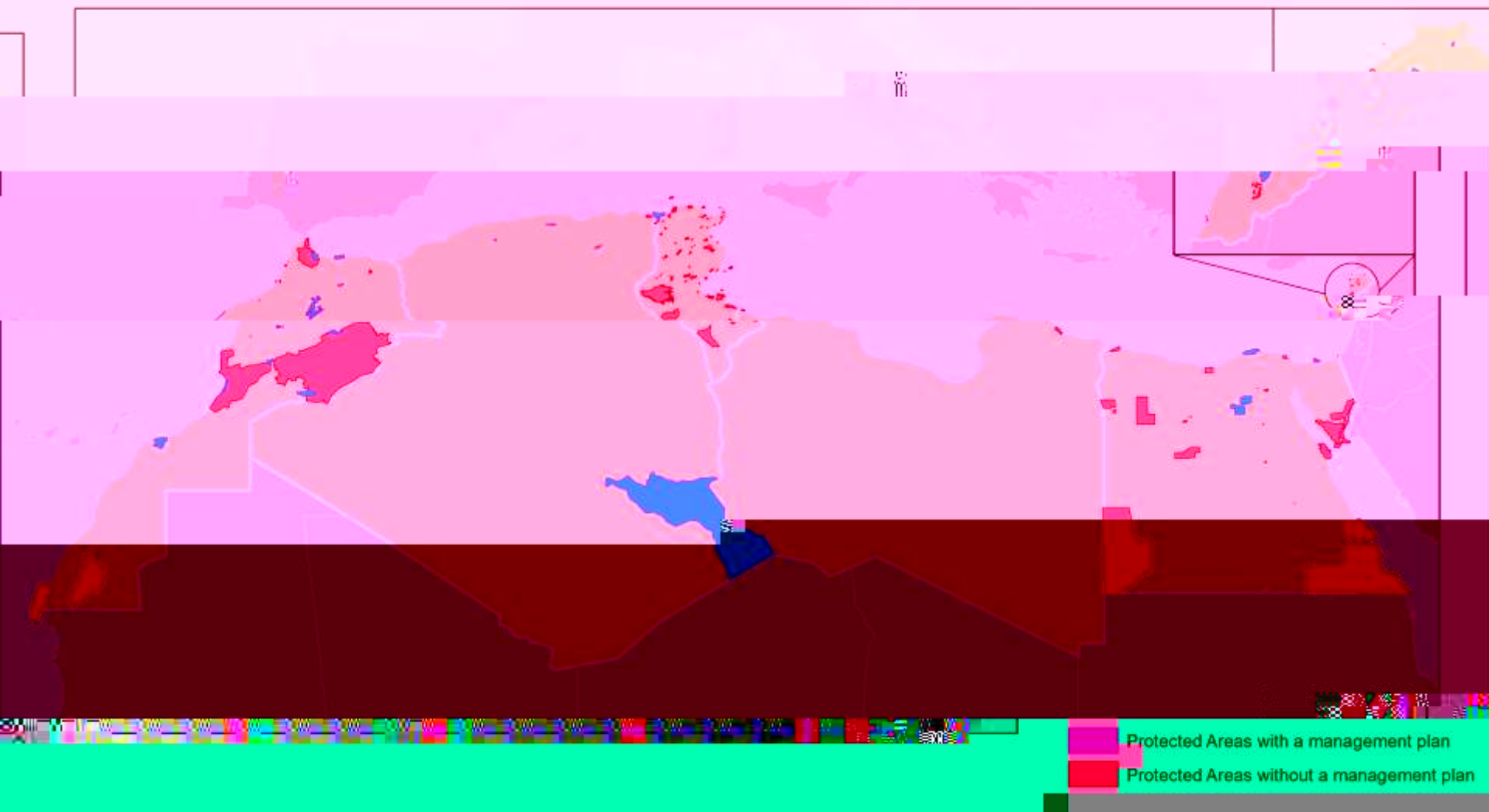
Gap analysis - Key Biodiversity Areas (KBAs) / Ecologically or Biologically Significant Marine Areas (EBSAs)

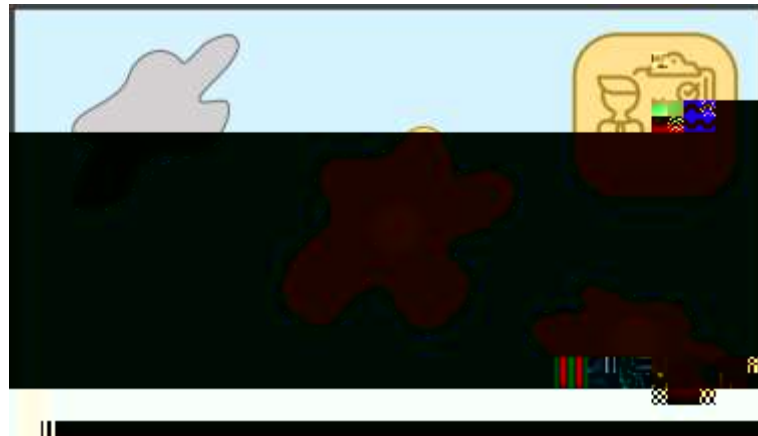




3. PA Management and protection

Protected areas management

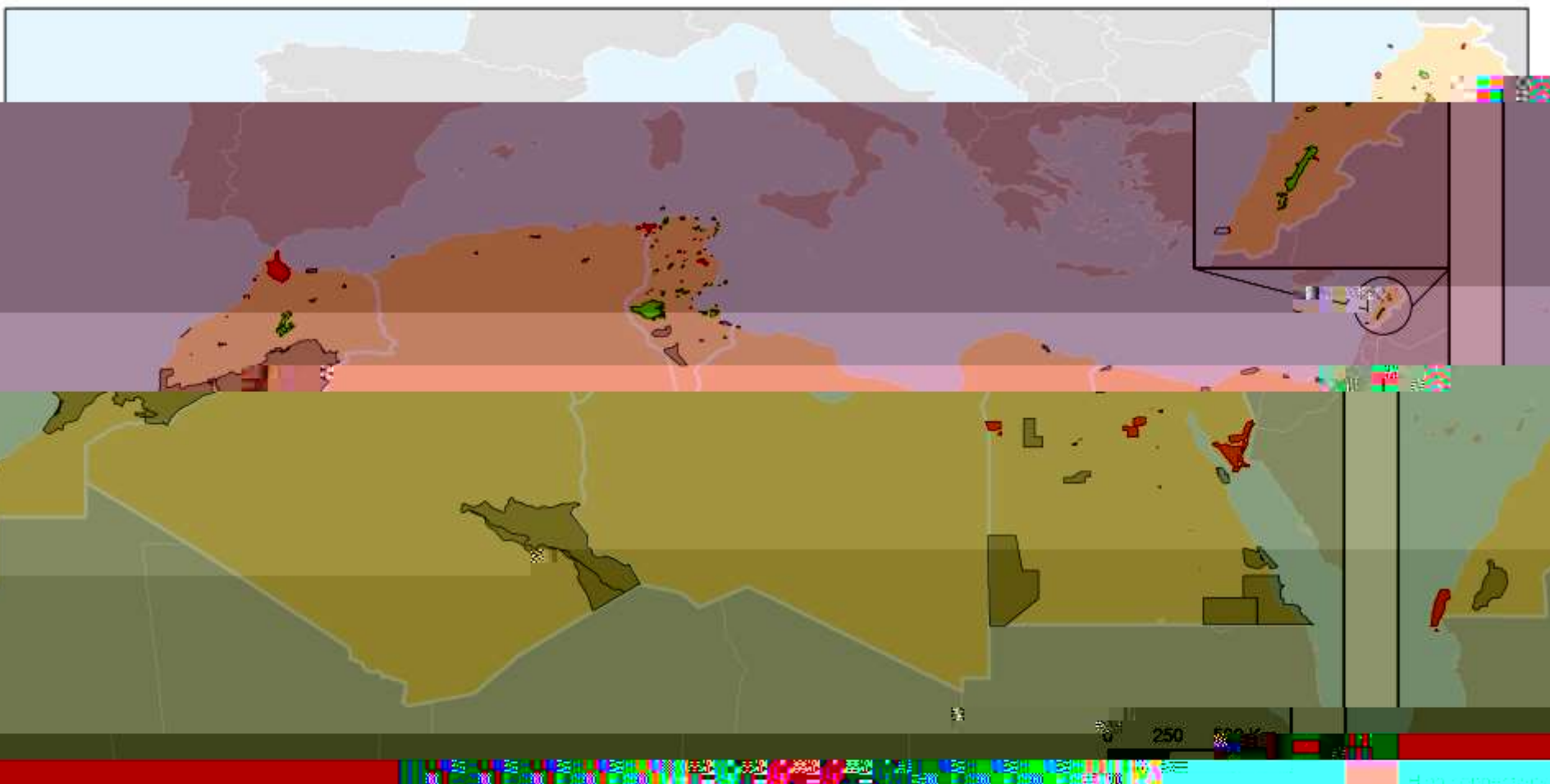




•

2.4.1. Atlantic and the Sea i. PA Connectivity

Protected areas connectivity

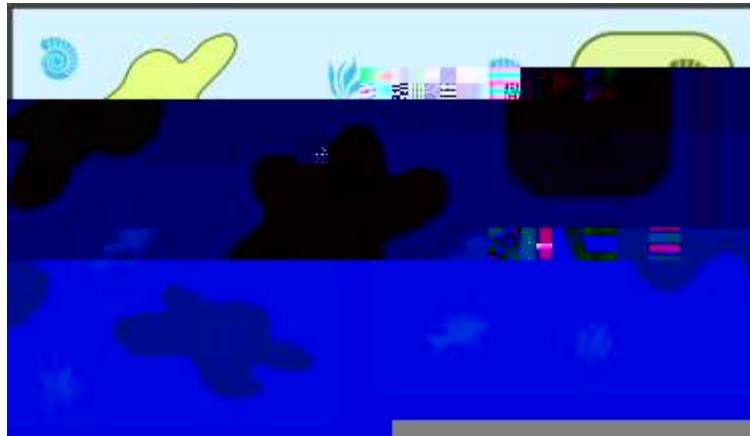


Not connected

Permanent Hunting reserves were excluded from Morocco

The information presented in this map do not imply the expression of any opinion whatsoever on the part of the authors or contributory organisations, editors or publishers concerning the legal status of any country, territory, city area or of its authorities, or concerning the delimitation of its frontiers or boundaries or the designation of its name, frontiers or boundaries.

•

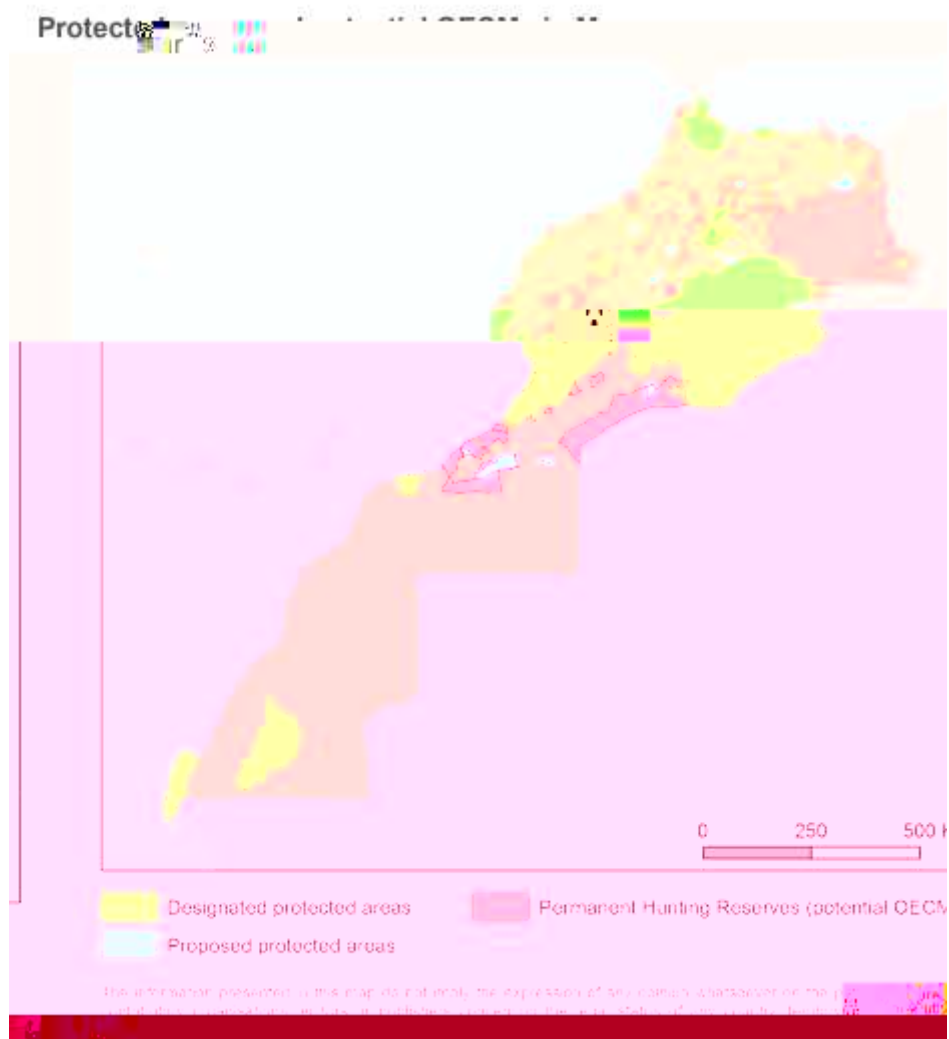


•

•

5.1.







1



11

1

11 11