

FAS



I

UN
env

IN COLLABORATION WITH



FUNDED BY





***Stenella
coeruleoalba***

Stripe



Glo Med

p



Physeter macrocephalus

Sperm whale / Ka alot

♂: 16-18 m / ♀: 11-12 m / NB: 3.3-4.2 m



Glo Med



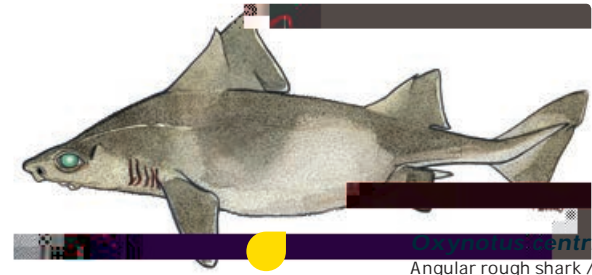
SEABIRDS



SEA TURTLES



Caretta caretta



Oxymonacanthus centrina - OXY

Angular rough shark / Domuz Balığı

Ad: up to 1,5 m

SPONGES



Massive keratose sponges – KERA



Sarcotragus sp.



Sarcotragus sp.



Hippospongia communis



Ircinia variabilis

Globular sponges – GLOS



Suberites domuncula



Tethya aurantium



Therea spp.

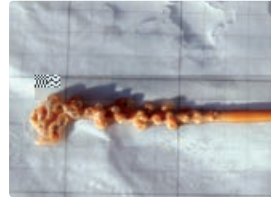
CORALS

Salmon-pink, brittle fan-shaped gorgonians - CALL



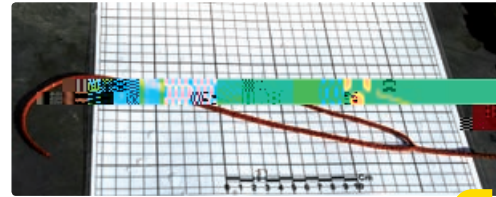
Callogorgia verticillata

Funiculina quadrangularis



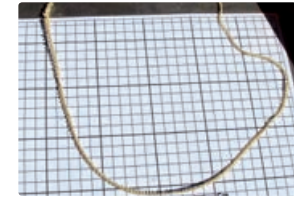
Kophobelemnon stelliferum

Candelabrum-shaped, red gorgonians - ELLP



Ellisella paraplexauroides

Tall, white or yellow whip gorgonians (*Viminella flagellum*) - VIMF



Viminella flagellum

Abbreviations

Ad: Adult
 ♂: Male
 ♀: Female
 NB: New Born
 W: Wingspan

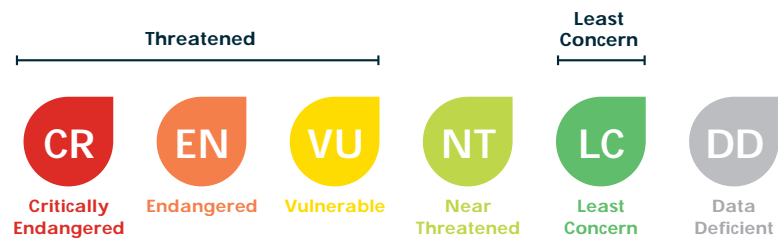
Symbols

***Isurus oxyrinchus* – SMA**
 Shortfin mako /
 Dikburun Canavar
 Ad: up to 4,5m



Key to IUCN Red List category symbols

For each species sheets, the IUCN categories relating to the conservation status both globally (Glo) and Mediterranean (Med) level are reported, according to the following scheme:



Common name in English and Turkish	Species size given as total length or wingspan for Adults (Ad) or Females (IUCN Red Data List status at Global and Mediterranean	The species have to be released alive, it cannot be retained on board, transhipped, landed, transferred, stored, sold or displayed or offered for sale*