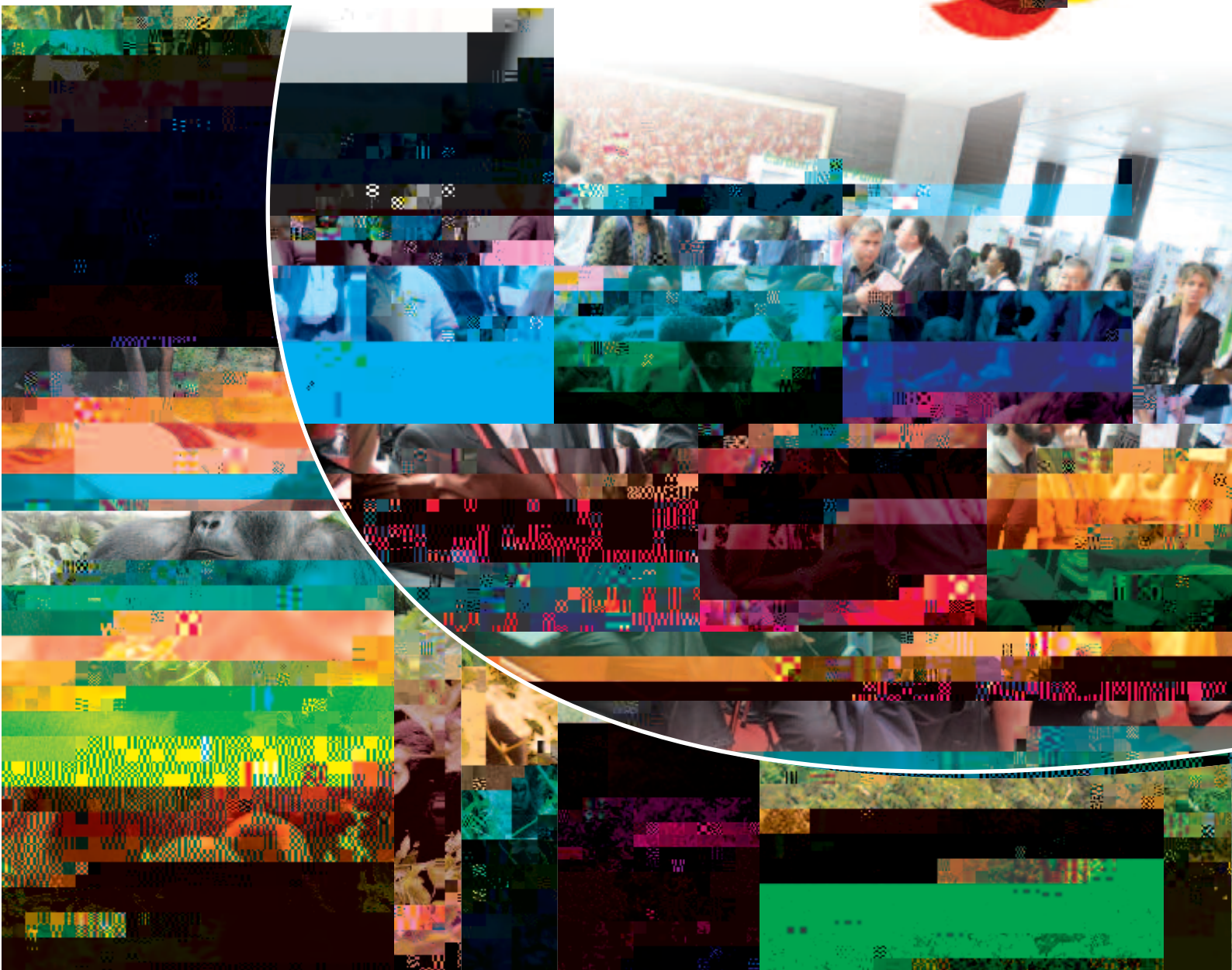




2012 annual report



CENTRAL AND WEST AFRICA PROGRAMME (PACO)



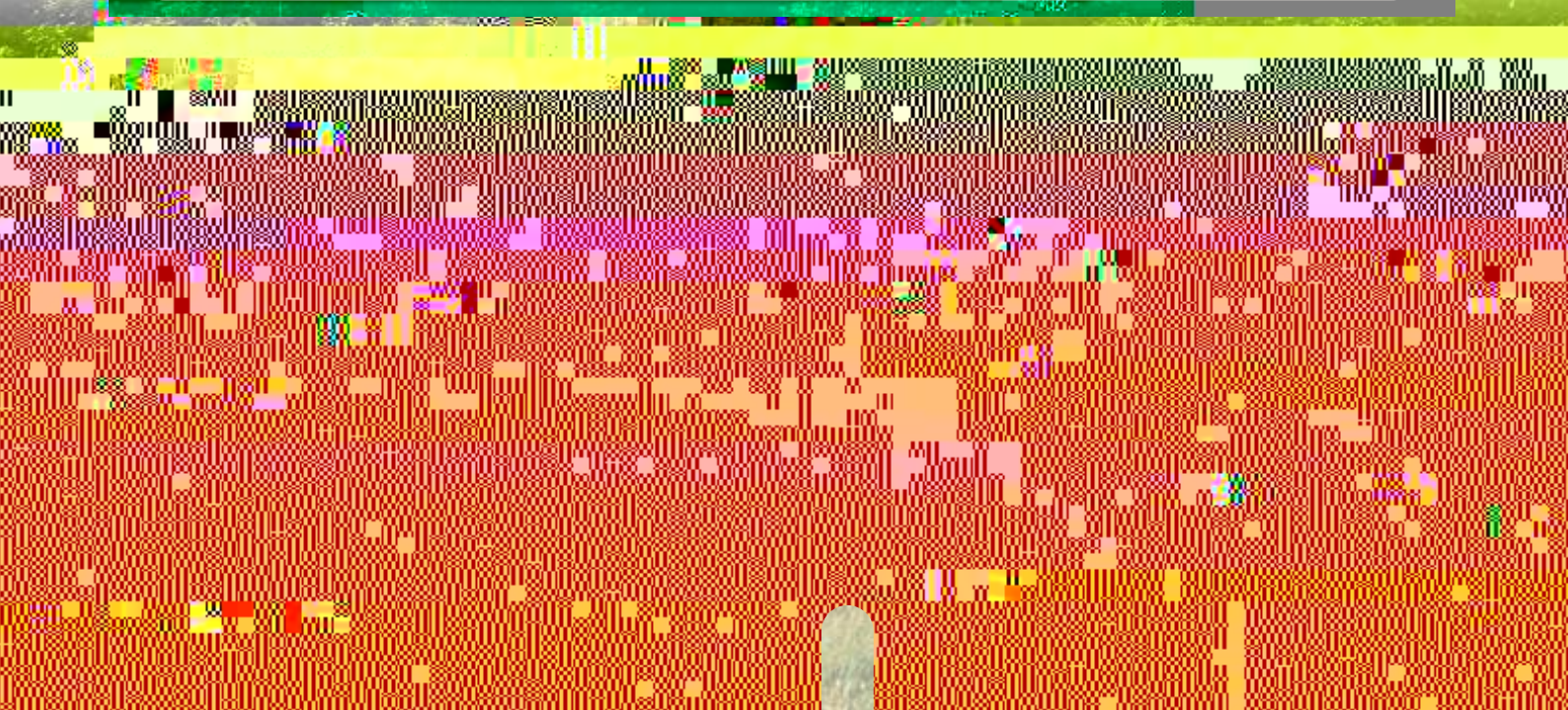
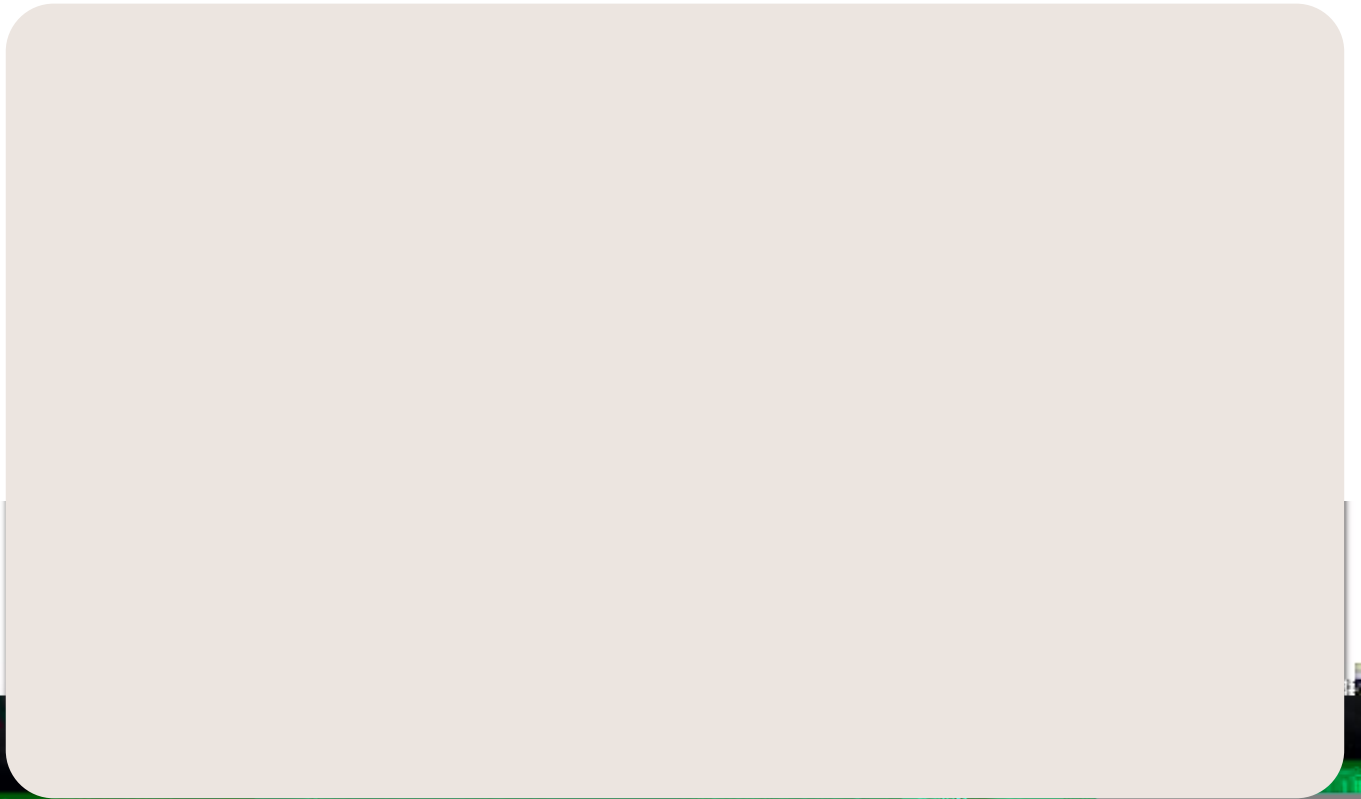
! FDE=6 :? H:9 B6 G@C2? 4CDD J62C  
92D366? 492=6?8:78 7@C 6?E2=2?5 . 6DE 7C42  
■ 5F6 E@B6 D@: @A@E42= @> :E2C F?GDEB2E  
2764B5 2 ?F> 36C@4@F?E6D . 9:6 :? > @E42D6D  
B6D6 4CD6D92G 925 2 92AAJ 6?5 :? D@ 6 42D6D=6  
:? \$ 2= B6 J62C6?565 H:9 @F?E2?J 4=62CD8? @G6F?  
@DFD2:?23=6 A6246 @GD3=6 D6G?:EJ 2> @8 B6  
A6@A= :? B6 2764B5 K@6D 06EDF49 A96?@ 6?2 B2E  
F?7@F?2B= B?5 E@ 36 G4FC6?E F?56G :?6 B6  
64@ @ :4 56G=A> 6?E@ B6 4@F?E6D :?G@65 2?5  
B2E@B6 DF3 G8:@ 2D2 H9@6 +96J > 2<6 D@:6E6D  
:? 6?E@ G8:@D 7C8:6 @ 3@D 56D @B6 3@56D  
2?5 DFD2:?23= 2764EB6 ?2FC=6?G@> 6?E

\$ @G@6C J62C 92D6I A6C6?465 6?G@> 6?E=  
2?5 9F> 2? 5:D2D6D 2D H6=2D D6G@ 4CD6D :?  
A@B4B5 2G2D ?@23=:? 6?E2= 7C42 H:9 B6 > 2DD  
<=?8 @76=6A92?B:? 2> 6@@ 2?5 :? B6 6> @C2E4  
) 6AF3=4 @ @8@: ? B6 - :F?82DH: @=6I A=@2E@  
B6 <=?8 @ @2AD2?5 2DD2D?2E@ @7@6DE8F2G  
#:<6 B6 23@G > 6?E@65 6G?B B:D@ @HD B2E:  
\* F3 \* 292C? 7C42 ?@:78 :D?6G6C249 6G65 @46  
2?5 7C2=2?5 B2E2?J 56G @=6I B6 5D2@B6 @G@D@G 5@22 @22?254@2 6?12 7D7 2515 0 253@220TD [0?2284 0 62 2\*6 TD [(\*)-4]5  
4@ 6 F?5649DJ @=6I B6 5D2@B6 @G@D@G 5@22 @22?254@2 6?12 7D7 2515 0 253@220TD [0?2284 0 62 2\*6 TD [(\*)-4]5





+96 H@> @, % H2D86265 E@H25D:> A00378 B6 > 2?286> 6?E@' 006465 62D ' @ B6 3:@@:42=5:6DE 2?5  
?2F2=6D@F46D E:?0065 B6 \$ 6> 36D2?5 6I A6ED70, % @ > :DD@D B6 @ > :DD.@ @ ' 006465 62D> @  
A2E4F2G 2?5 2 206 ?F> 36C@?2E@2= DF3 68:@2= 2D? 286?4:6D DF3 68:@2=?6H@>D 2?5 :?6C2E@2=A2E6D  
. :5=6 @D6C2E@ \* @:6E . \* @52E@ ?6C2E@2=6 5F 2?4 5 6F:? V100 V Pri00 & @0 "0& P6



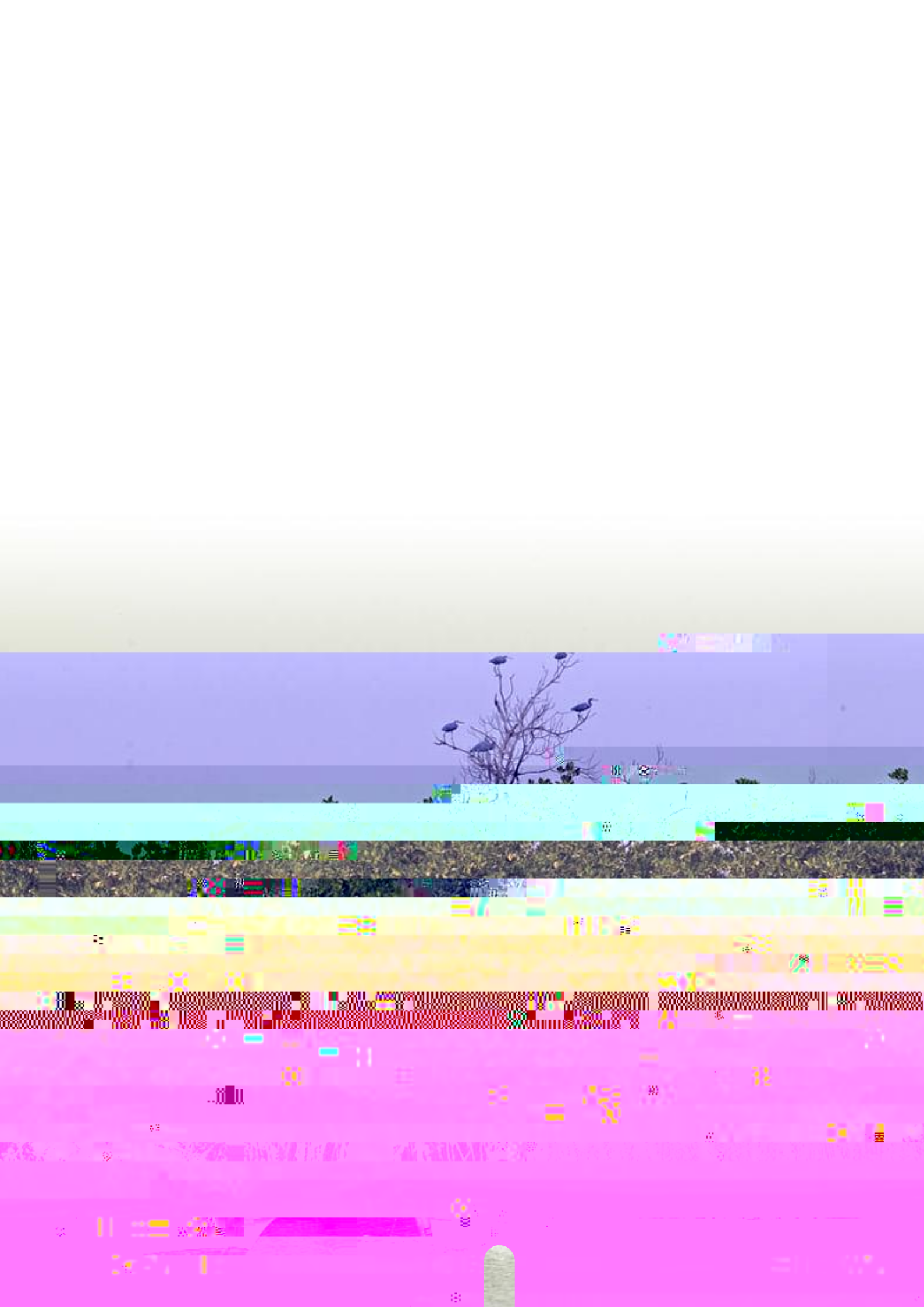




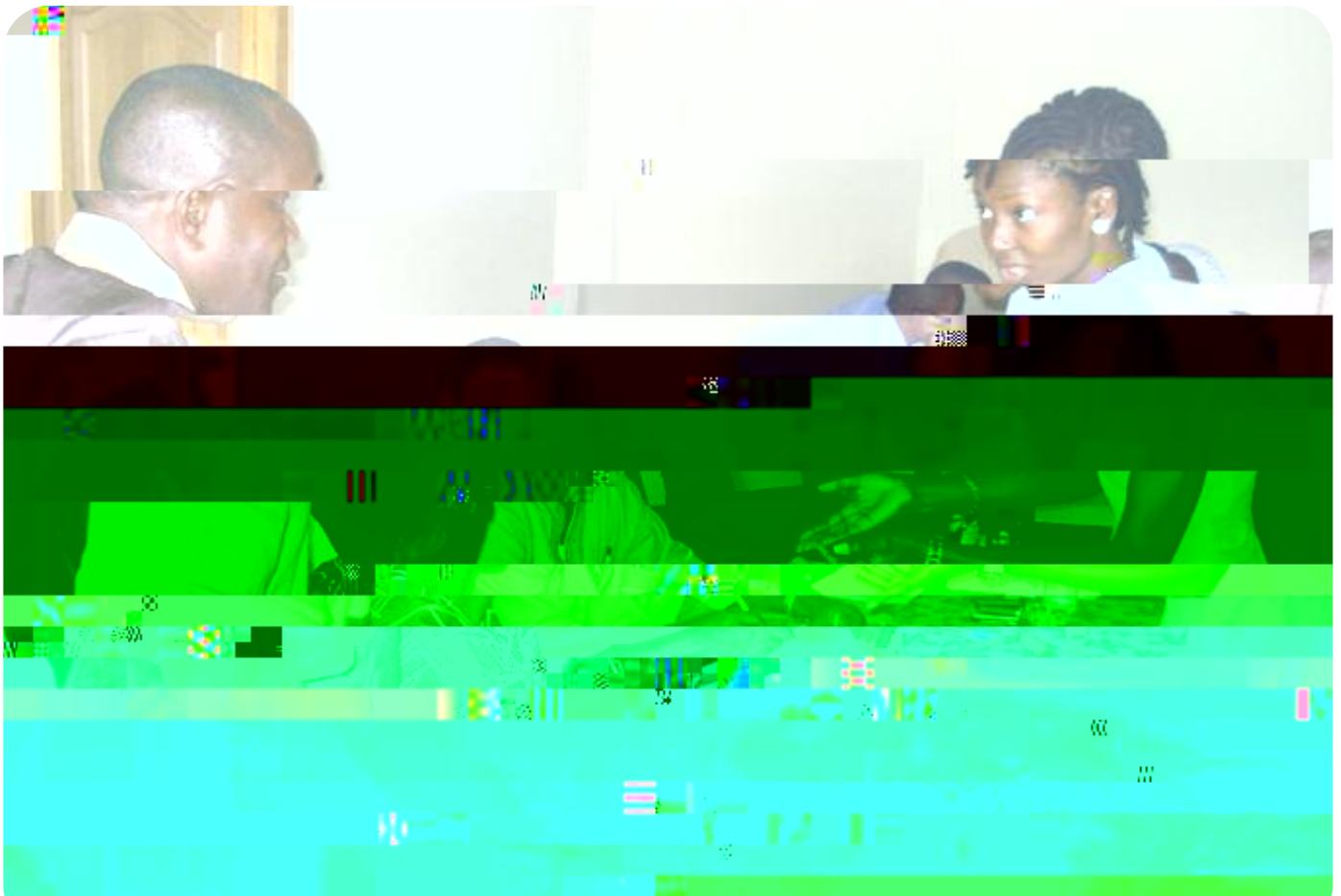
% 7= : @ ; < + 5 1 6 . 7 < 9 : 8 > 2 7 0 \* - - 2 3 7 ^ 5 5 2 . 3 1 8 8 .  
: = 9 9 8 : < 8 ? 8 6 . 7 2 / 8 . : ; < . 9 . 7 . 7 < 8 6 6 = 7 2 2 :



:G? B6 4⇒ 2B G=2B5 DE<6D @567@6DE@ B6 G5F4E@  
> 6492?:D> @ 6> :DD.@D 5F6 E@ 567@6DE@ 2?5 7@6DE  
568Q52E@ )



P \$ 2AA:78



7<8- =, <87

86 98; 287 \*7- ;, 89. 8/ <1. 9:83, <

+96 6?G@?> 6?E=C@6 @7@6DEH@5 H:56 :D<? @H? 2?5  
BF2?E765 +9:D 61A=2?D H9J B6 ,?:B5 %2E@D  
Q> 6H@< @G?E@ @ => 2B 92?86 , %  
?:E2B5 B6 ?68 @E2E@D @ ) 65F4:78 > :DD@D 7@<  
67@6D2E@ 2?5 @6DE 68Q52E@ ) :?  
56G@A:78 4@?E6D ) :D2 D6E@D6AD56D8?65 E@  
FD6 > 2G@E2?5 7??4:2=:?46?E6D: ? @56CE@65F46 B6  
6> :DD@D @ 8@6?9@FD6 82D6D 7@< 567@6D2E@ 2?5  
7@6DE568Q52E@ FE) :D> @6 B2? ;FDE2G@565  
567@6D2E@ E2=D@:74F56D B6 @6 @ 4@D6@2E@  
DFD2:723-6 > 2?286> 6?E@7@6DEH 2?5 6?92?46> 6?E@  
7@6DE42@ DE@<D ) @4@?:K6D2 3@25 Q?86 @  
24EGE6D 2:> 65 2E@GG?8 568Q565 7@6DE H9:6 AFG  
) @J @4@?:K6D A@Q?> D B2ED2G 6?52?86@5  
G@?: 7@6DE +96 A@E" J@28@6> 6?E36:78 ?68 @E2B5  
F?56CB6 , % 4@62GJ E@6ED B6 @6 @7@6DEH :?  
DE@?8 42@ 2D@:D> 2J @76C255:E@2=@AA@E?:E6D7@  
86?6Q2E?8 > FEA-6 36?67E

+96 7@6DE 6DE@2E@ 2DD6DD> 6?E H2D 42@65 @FE E@  
4@E3FB E@B6 :> A-6> 6?E2E@ @B6 61 :DE?8 @G?E@  
@ :@@:42= :@DEJ :49: +2@6E E@6DE@ 2E  
-62DE @568Q565 64@D@> D3J 2DH6=2DB6  
, % D) 8@=@D@H:78 92-E?8 2?5 @6@?8  
7@6DE4@6C2?5 42@ @D 2?5 B6 @76?46 @B6  
' 2@E6D &' 564: @D @ ) :?4F5:78  
6?92?46> 6?E E@: 4

> A-6> 6?E2E@ @ DF446DDF=) 24E@D ?665 E@  
6?DF@ B2E 7@6DEH 2?5 B6 D6G46D B6J A@Q56 E@  
9F> 2?<:75 2@ 4@D6@65 > 2?2865 2?5 @DE@65 :? H2JD  
B2E249:6@ 4=> 2B 492?86 > :B82E@ E@6ED 96-A D64F@  
DFD2:723-6 =@=9@@D 2?5 > 2:7E: ? B6 23: =@ @ 2?  
64@D@> E@7?4E@ 962-B:J 2?5 4@E?F6 E@A@Q56  
8@QD 2?5 D6G46D

D) ?68 @E2E@D4@E?F6 E@567?6 B6 :?:E2E@ 2E  
B6 :?B@2E@2=-@G= @6 <6J 2DA64EB2E92D 364@ 6  
A@Q :?6?E:D B6 ?665 E@: ?B8Q@B ) 24EGE6D H: B  
7@6DE 6DE@2E@ 24EGE6D 2EB6 -?5D42A6 -@G= +9:D  
H@F-5 ?@ @J 6?DF@ 2 > @6 9@DE4 2?5 DFD2:723-6  
2AA@249 E@ 65F4:78 6> :DD@D 2?5 @A> :K2E@  
36?67E 3FE2-D@4@E3FB E@B6 67:4:6?EFD6 @Q2B6C  
D42@6 @D@Q6D ? , % :? A2@6@9:ADH: B B6  
-@2=' 2@E6@9:A @ @6DE #2?5D42A6 ) 6DE@2E@  
> 2AA65 H@5H:56 A@6?E2=7@ -?5D42A6 6DE@2E@  
@DF-E?8 :? B6 :DD:78 @B6 @? 92-6?86 E@6E5FC?8  
2> :?:DB@2=@F?5E23-6 9@B5 3J B6 6G 2? @6?> 6?E  
42=?8 7@6DE@2E@ @ > :=@ 964E@D @567@6DEH  
2?5 568Q565 -?5D3J

92?2 D@> 2:?:78 7@6DE4@6C92D366? BF: B 65F465 :?  
@46?EJ62D ? @56CE@4@E?F6 E@> 66E 92?2 D 7@6DE  
@D@Q6 ?665D :EH2D 564:565 E@> 2A B6 A@6?E2=7@  
@DE@?8 92?2 D 7@6DEH +9:D H2DH9J , % 564:565 E@  
4@E3FB E@B6 92?2 ) A@6DD3J :> A-6> 6?E?8  
B6 A@64E E@65 MDD6DD?8 2?5 2A: E=K?8 @ B6  
' @6?E2=E@ ?92?46 @6DE 2@ \* :?<D B@Q?89 @6DE  
#2?5D42A6 ) 6DE@2E@ H9:6 6?67E?8 :@: @DEJ@9:D  
A@64EH2DFAA@B5 3J B6 ?B@2E@2= => 2B ? :E2E@  
@B6 6G 2? \$ :? :DE@ @ ?G@> 6?E \$



\$ @?8 7@ @6 @C062CAC@BQ>> 6 E@2?@B6C, %' & ??F2=C@A@E

P. @< 5@6 H:B ?2E@2= A2E6@ \* EBD 2?5  
:7B@2E@2= 6G-@>

P ? ) B6D6 24E@D92G 74:4E5 B6 5Q7E?8 @  
>.:?DBC2= 564G6D B2E D9@-5 6?23-6 B6  
DE?52G:K2E@ @E- 36C6I A@E 55:E@2- B6  
5:D4FD@D@ B6 # + @E#2H ?7@6> 6?E  
@G?2?46 2?5 +256 H6G GDF> 65 H:B B6  
F@A62? ,?:@ , 7C B6 A@A2QE@ @ 2  
- @F?EQ ' 2CF6D:A 8G6> 6?E - ' 2?5 2  
5:G4EQ @7GDEFD6D:? 2D @8@H2D56G-@65

P ? 2 [300]F343620726272[016]407B86.2385J 05[0]TJ(0)540(0A)00F4 0156D 0.238 >J 0.5 0 Td [811J 0D)-40fd [<00  
@ 2, BAEB4

\$ @?8 7 @6 @C062CAC@C2>> 6 E@2?@96C, %' & ??F2=GA





\$ @?8 7@ @6 @FC062CA0@C



3F:-5:78 2DH6=2D:??@E@ ED9@-5 2-D@36 ?@65  
B2E\$ C\$ 2> 25@ :2=@ B6 7@ 6CAGD56?E@ B6  
) 68:@2= @ > :#6 @ \$ 6> 36D @ B6 6?E2=2?5  
. 6DE 7C42 68:@ 92D 366? 6-64B5 2D 2 4@?4:@C  
5FC?8 B:D4@8GD

+96 GD3:=E @ B6 68:@ 2EB6 . @5 @D6GE@  
@8GD92D366? @> 2C-23-6 H: B6 2#?52?46 @  
@ B6 \$ 6> 36D7@ B6 68:@ H9@925 A2:5  
@7E7d [



' " " " \$  
!  
"

? !6;F B6 \$ 6> 36D 2AAC@65 B6  
' @C2>> 6 +9:D ' & ' @C2>> 6  
5:64EJ 4@EC3FE6D E@B6, % 8=@2=' @C2>> 6  
F:=FA@ 2 6764E@ :?E2B5 7@ 62GJ :? B6  
@C@FD' & F?:E B6 A@C2>> 6 92D366? B6 EA:4  
@ A6C@:42= 5:D4FDD@D H:B B6 \$ 6> 36D ?  
4@ A=2?46 H:B B6 D?8=6 A@C2>> 6 92B6C B6  
' & A@C2>> 6 :DD66<?8 E@ @:46 2=  
, % 4@ A@6?E:?? B6 68:@ H9:6 64@?:K?8 B6  
:?:E2E6D @H?65 3J \$ 6> 36D 2?5 H9:49 2@ ?@  
4@665 :? B:DA@C2>> 6

> 2??6CE@6?DF@ 3@25 FE+K2E@ @73:6:6DEJ E@E  
2?5 <? @H=6586 7@C:> A@65 4@D6C@E@ 6 E>

F:=FA@ B66 > 2:@C262D B:D:D B6 > @E4@4:D6  
A@C2>> 6 B2E, % 92D 66C 925 E:D 2=D@ 2  
A@C2>> 6 B2E36DE2=6D @ 3@6 B6 DF3E66D @  
B6, % GD@ +96 4@6 5@ 2:? :D @ 4@F@6 B6  
4@D6C@E@ @?2FE@ 3FE2=D@B6 6?92?46> 6?E@:E  
@F6 +96 D64@5 5@ 2:? 2:> D2E3F:-5:78 2 Z:CH@5  
2D D2B5 :? B6, % GD@ B@F89 :> A@65  
6?GC@> 6?E=8@6C?2?46

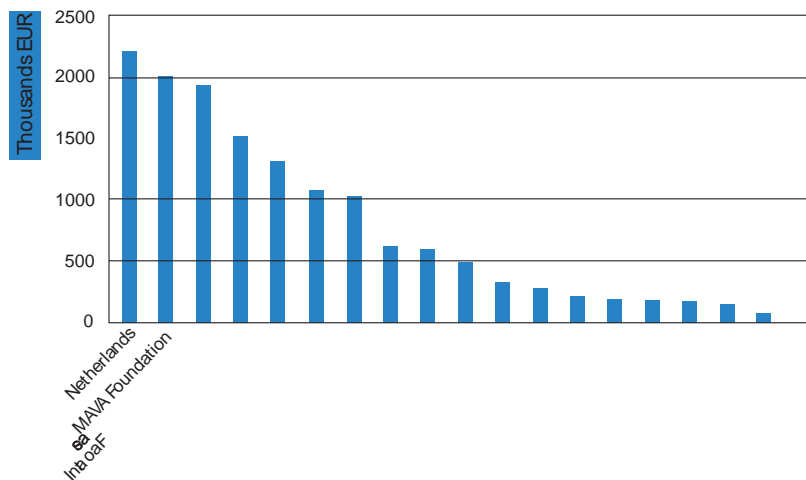
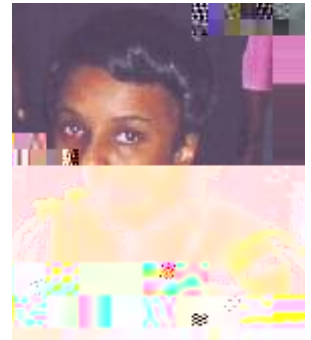
:?2= FD?8 B6 D2> 6 2AAC@249 B6 B:6 5@ 2:?  
A@656D 2 6DA@D6 E@ B6 8=@2= 492=6?86D B2E  
3:6:6DEJ 42? 2556DD +9:D 5@ 2:? :?E@F46D B6  
?@ @?2FE@ 32D65 D@FE@D@B2E@F6 64@DJ@> D  
E@3C?8 2 Z:C2?5 64@ @ :4 4@EC3FE@ E@B6  
6D@FE@ @ 4=> 2B 492?86 7@6  
D64FCEJ 2?5 64@ @ :4 56@=A> 6?E  
:DDF6D +9@F89 B6D6 B66  
5@ 2:?D B6, % 4@ A@6?E  
A@6?E:?? B6 ' & 68:@  
H:= H@ :? 2 4@65:2B5

"\$ "# !#

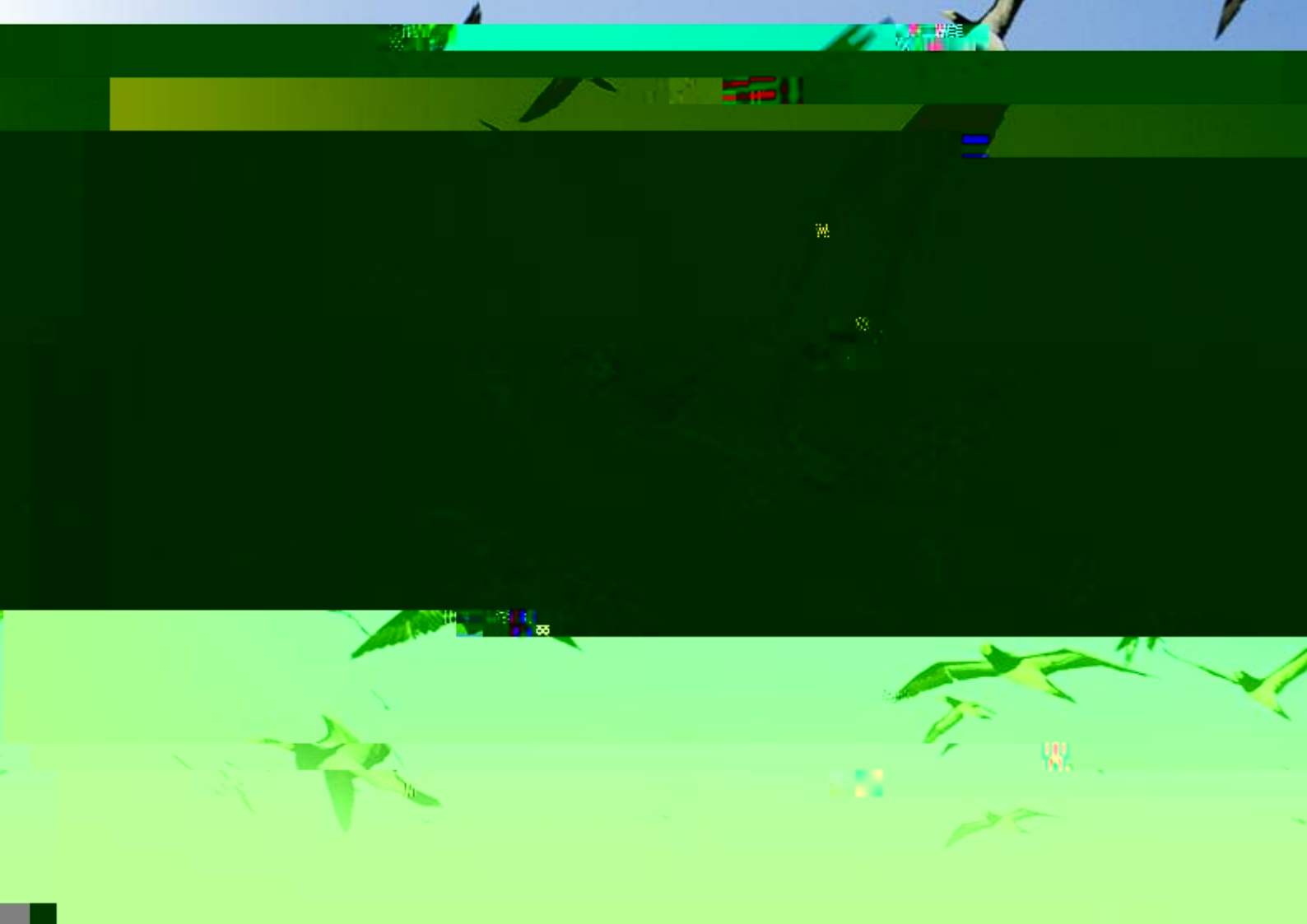
?7



,. \*72-6 \*7- 52 5 \*2\*: 7\* ;.;; 287 8/  
:=; -2 \*726 \*287 7 \$7. \$\*8=6 \$.7.0\*5



+96 > 2?286> 6?E@B6D6 7?5D@BF:GD2? 256BF2B 4@ A=2?46 H:9 AC@65FC6D 2?5 4@E24E +96D6  
 2?5 H6=> @:EQ65 > 6492?:D> DDF49 B6 G2C@FD 2F5:ED 92G 2=@H65 B6 :56?E742E@ @H62<?6DD6D  
 F?:E @' & 2G DF3> :B5 E@:?BQ2=2?5 6I BQ2= B2E92G 7@CH9:49 4@B4EG > 62DFGD 92G 366?  
 2F5:ED 2?5 GDA64EGJ :? 6GQ J62CH9:49 E<6? @2G F?56CH2J  
 96-AD E@ 4964< B6 4@D.DB?4J @ @A6QE@D 2?5



0 62C 92D366? 2 925 @6 2ED6GQ=6G-D H9:49  
D@ 69@H 2764B5 B6 :- A-6> 6?E@ @ ' & D  
A

INTERNATIONAL UNION FOR