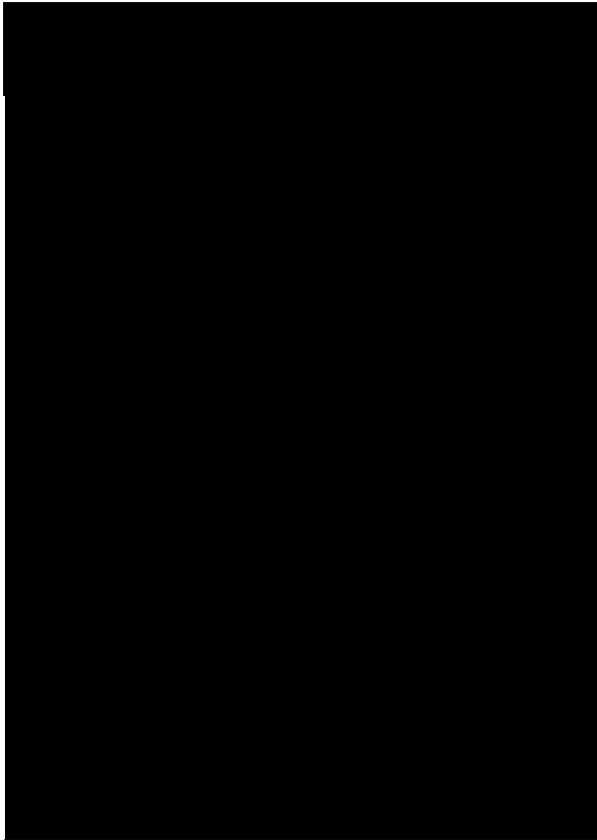
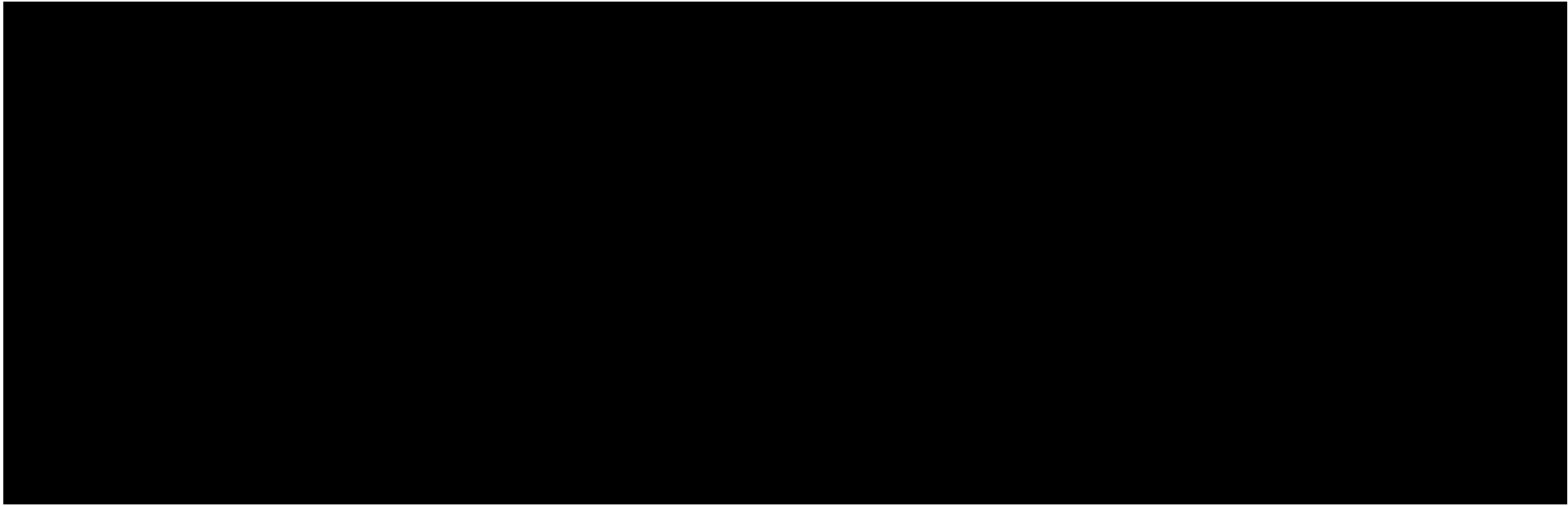
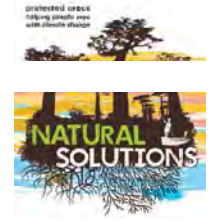


 ON PROTECTED AREAS





Climate change adaptation and mitigation:



Origin and goals of the report

An enquiring mind! Evidence!

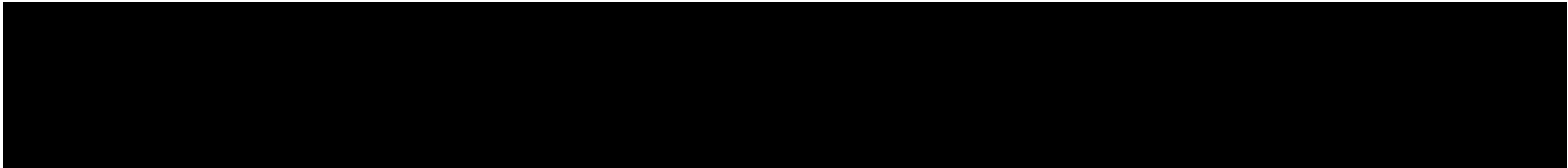
3 years in the making

IUCN 'One Program' product

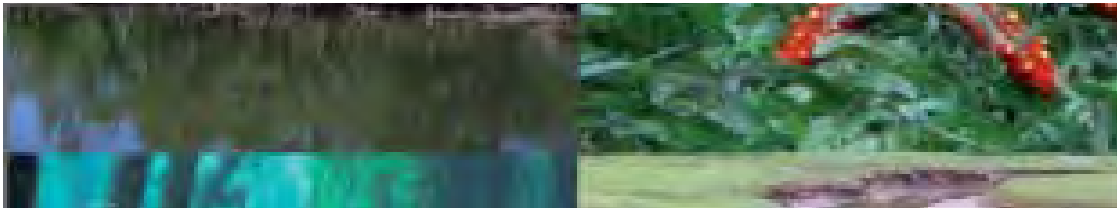
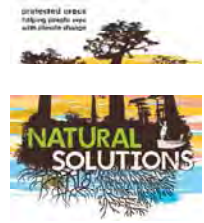
Project ramp-up (WCC, IMPAC 2, CHOW)

Goals – Focus on the ocean

Expose the scientific evidence base



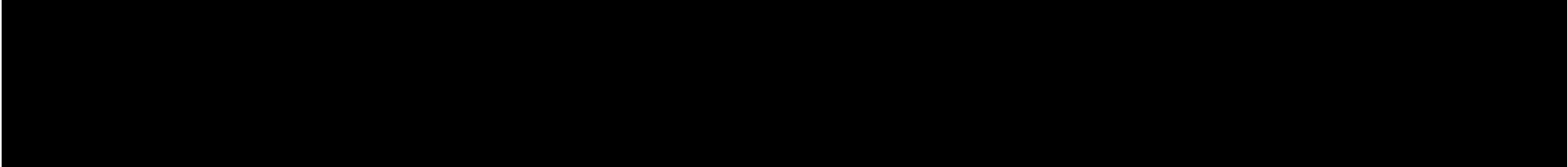
Focus of the report



 ON PROTECTED AREAS



/



-

-

-

-

•

•

-
-
-

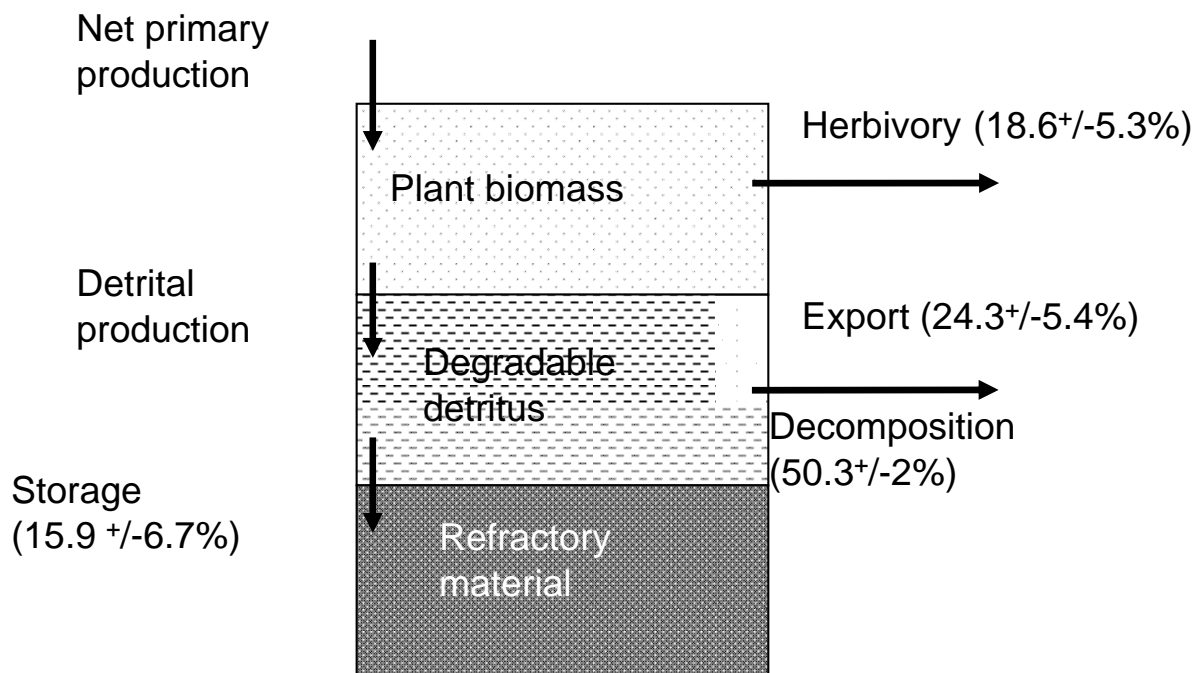


Figure 2 Fate of primary production, values in brackets represent % of net primary production. The data were derived by averaging independent estimates from a range of seagrass species (adapted from Cebrian 1999 & Duarte & Cebrian 1996)

•

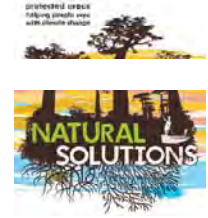
•

•

•

•





Overall conclusions

- Represent 'missing' sinks
- Globally significant role
- High carbon storage capacity by unit area
- Comparative value estimated 10x temperate and 50x tropical forests
- Contribution visible % at country level
- Carbon fixing process important – below ground
- Under significant threat/incomplete inventories
- Mangroves/seagrass meadows loss equivalent to Amazon loss
- Need to account for in international climate change mechanisms
- Need for inclusion in National Inventory Submissions
- MPAs have a critical role to play in securing the future of these carbon sinks